

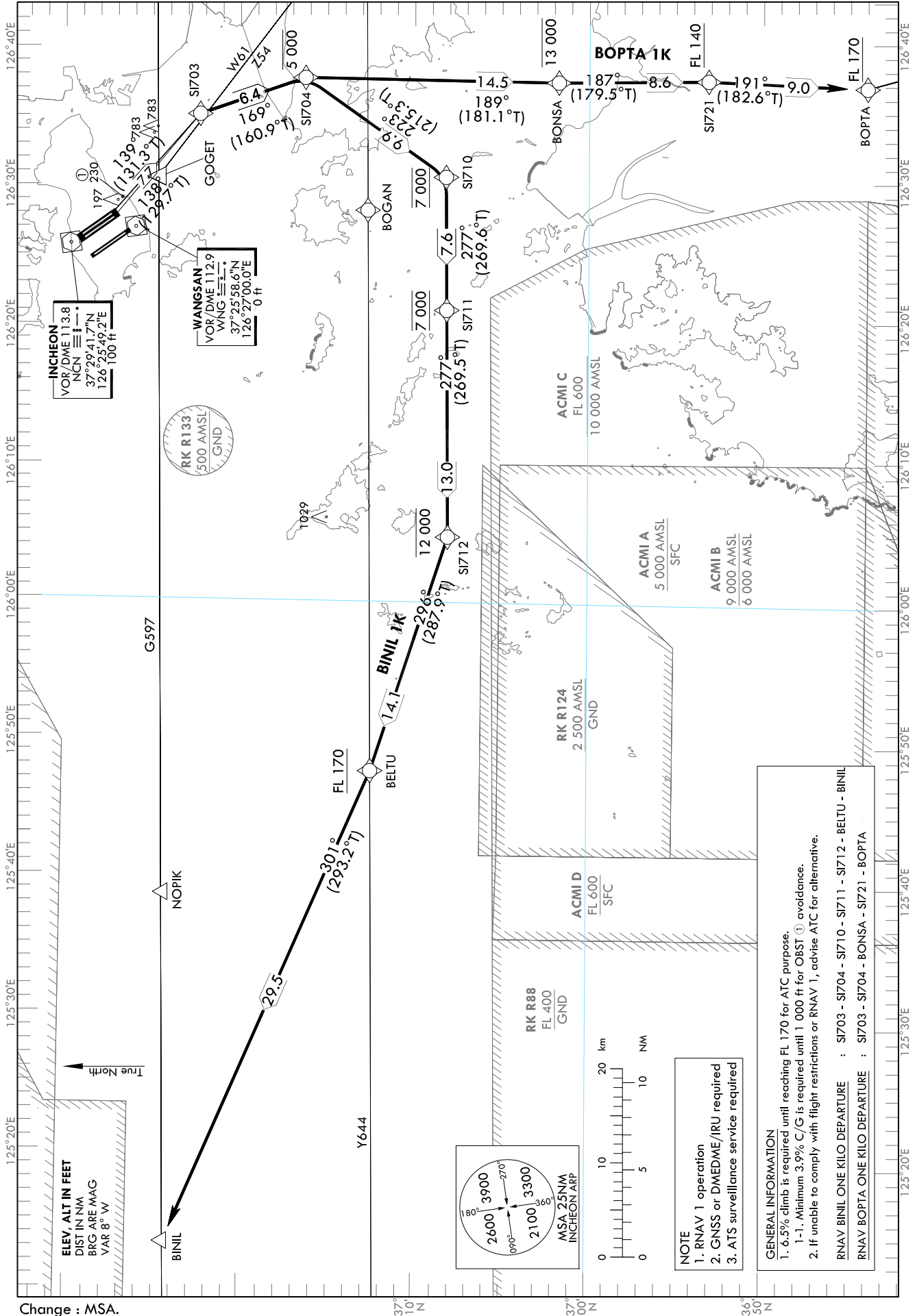
STANDARD DEPARTURE CHART
INSTRUMENT (SID) - ICAO

TRANSITION ALT 14 000
TRANSITION LVL FL 140

SEOUL DEP 125.15
121.4
124.8
INCHEON TWR 118.2
118.8

SEOUL/Incheon Intl(RKSI)
RWY 15L/R
RNAV BINIL 1K
RNAV BOPTA 1K

Note : Departure under ICAO Flight Procedures.



Change : MSA.

SEOUL/Incheon Intl(RKSI)
RWY 15L/R
RNAV BINIL 1K, RNAV BOPTA 1K

AERONAUTICAL DATA TABULATION

Standard Instrument Departure Procedure Coding Tables

Serial Number	Path Descriptor	Waypoint Identifier	Fly-over	Course/Track °M(°T)	Distance (NM)	Turn direction	Altitude (ft)	Speed (kt)	Coordinates	VPA/TCH	Navigation specification	Remarks
001	CF	S1703	-	15L-139(131.3) 15R-138(129.7)	7.7	R	-	-	372218.4 N 1263507.0 E (R 269 SEL/D17, R 143 NCN/D11)	-	RNAV 1	-
002	TF	S1704	-	169 (160.9)	6.4	-	-5 000	-	371616.3 N 1263743.8 E (R 247 SEL/D17, R 153 NCN/D16)	-	RNAV 1	-
003	TF	S1710	-	223 (215.3)	9.9	-	@7 000	-	370811.8 N 1263035.8 E (R 238 SEL/D26, R 178 NCN/D22)	-	RNAV 1	-
004	TF	S1711	-	277 (269.6)	7.6	-	@7 000	-	370807.8 N 1262103.5 E (R 247 SEL/D32, R 198 NCN/D22)	-	RNAV 1	-
005	TF	S1712	-	277 (269.5)	13.0	-	-12 000	-	370759.2 N 1260448.1 E (R 256 SEL/D44, R 281 SOT/D46)	-	RNAV 1	-
006	TF	BELTU	-	296 (287.9)	14.1	-	+FL 170	-	371218.2 N 1254759.0 E (R 265 SEL/D56, R 285 SOT/D60)	-	RNAV 1	-
007	TF	BINIL	-	301 (293.2)	29.5	-	-	-	372349.2 N 1251359.3 E (R 278 SEL/D81, R 290 SOT/D88)	-	RNAV 1	-

Serial Number	Path Descriptor	Waypoint Identifier	Fly-over	Course/Track °M(°T)	Distance (NM)	Turn direction	Altitude (ft)	Speed (kt)	Coordinates	VPA/TCH	Navigation specification	Remarks
001	CF	S1703	-	15L-139(131.3) 15R-138(129.7)	7.7	R	-	-	372218.4 N 1263507.0 E (R 269 SEL/D17, R 143 NCN/D11)	-	RNAV 1	-
002	TF	S1704	-	169 (160.9)	6.4	-	-5 000	-	371616.3 N 1263743.8 E (R 247 SEL/D17, R 153 NCN/D16)	-	RNAV 1	-
003	TF	BONSA	-	189 (181.1)	14.5	-	-13 000	-	370144.4 N 1263723.0 E (R 220 SEL/D27, R 267 SOT/D20)	-	RNAV 1	-
004	TF	S1721	-	187 (179.5)	8.6	-	+FL 140	-	365308.6 N 1263729.0 E (R 213 SEL/D35, R 245 SOT/D23)	-	RNAV 1	-
005	TF	BOPTA	-	191 (182.6)	9.0	-	+FL 170	-	364406.0 N 1263658.0 E (R 208 SEL/D43, R 231 SOT/D29)	-	RNAV 1	-

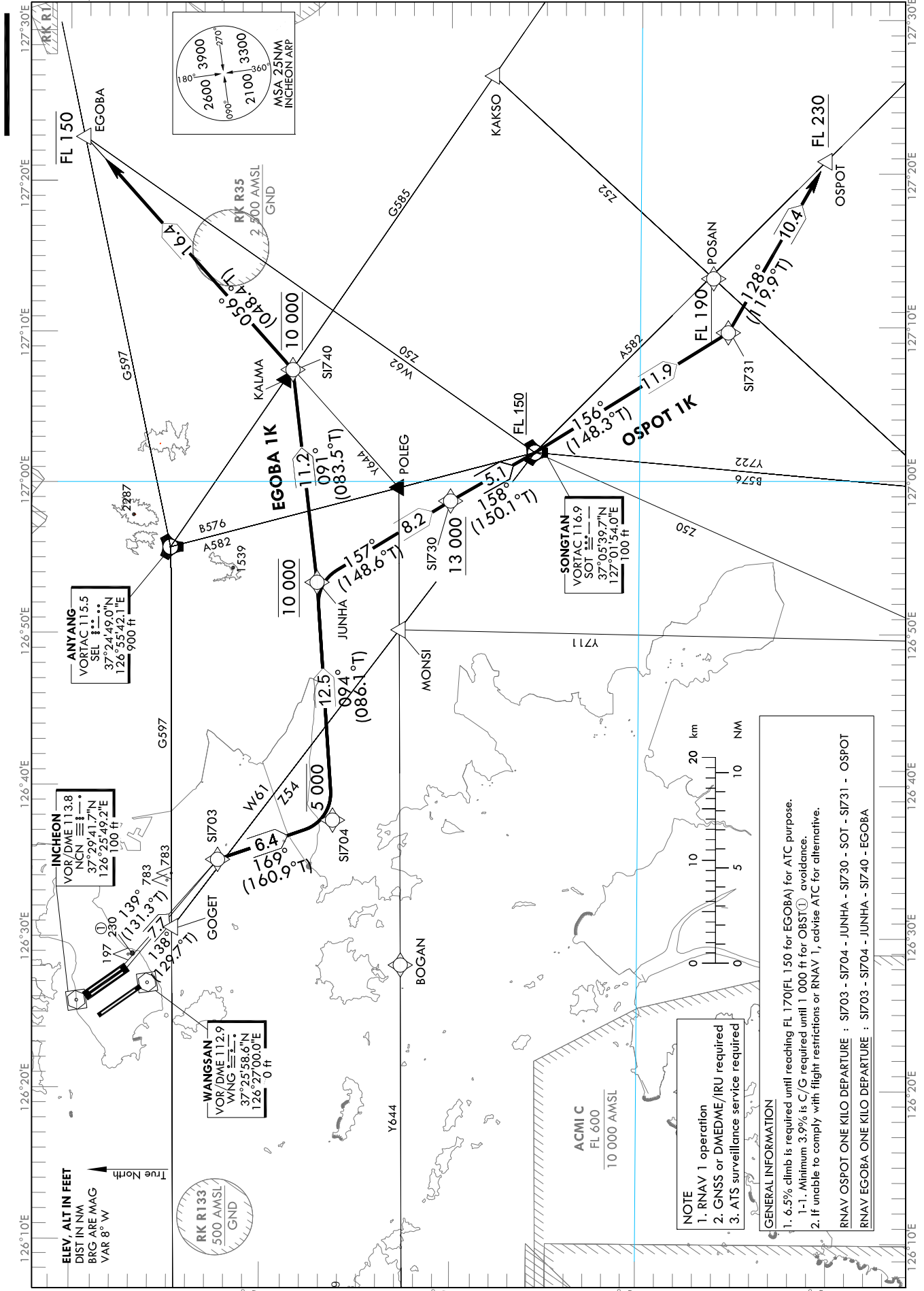
STANDARD DEPARTURE CHART
INSTRUMENT (SID) - ICAO

TRANSITION ALT 14 000
TRANSITION LVL FL 140

SEOUL DEP 125.15
121.4
124.8
INCHEON TWR 118.2
118.8

SEOUL/Incheon Intl(RKSI)
RWY 15L/R
RNAV OSPOT 1K
RNAV EGOBA 1K

Note : Departure under ICAO Flight Procedures.



Change : MSA.

NOTE

- RNAV 1 operation
- GNSS or DMEDME/IRU required
- ATS surveillance service required

GENERAL INFORMATION

- 6.5% climb is required until reaching FL 170(FL 150 for EGOBA) for ATC purpose.
- 1-1. Minimum 3.9% is C/G required until 1 000 ft for OBST avoidance.
- If unable to comply with flight restrictions or RNAV 1, advise ATC for alternative.

RNAV OSPOT ONE KILO DEPARTURE : S1703 - S1704 - JUNHA - S1730 - SOT - S1731 - OSPOT
RNAV EGOBA ONE KILO DEPARTURE : S1703 - S1704 - JUNHA - S1740 - EGOBA

SEOUL/Incheon Intl(RKSI)
RWY 15L/R
RNAV OSPOT 1K, RNAV EGOBA 1K

AERONAUTICAL DATA TABULATION

Standard Instrument Departure Procedure Coding Tables

Serial Number	Path Descriptor	Waypoint Identifier	Fly-over	Course/Track °M(°T)	Distance (NM)	Turn direction	Altitude (ft)	Speed (kt)	Coordinates	VPA/TCH	Navigation specification	Remarks
001	CF	S1703	-	15L-139(131.3) 15R-138(129.7)	7.7	R	-	-	372218.4 N 1263507.0 E (R 269 SEL/D17, R 143 NCN/D11)	-	RNAV 1	-
002	TF	S1704	-	169 (160.9)	6.4	-	-5 000	-	371616.3 N 1263743.8 E (R 247 SEL/D17, R 153 NCN/D16)	-	RNAV 1	-
003	TF	JUNHA	-	094 (086.1)	12.5	-	@10 000	-	371706.9 N 1265322.3 E (R 202 SEL/D8, R 337 SOT/D13)	-	RNAV 1	-
004	TF	S1730	-	157 (148.6)	8.2	-	+13 000	-	371005.7 N 1265843.0 E (R 179 SEL/D15, R 338 SOT/D5)	-	RNAV 1	-
005	TF	SOT	-	158 (150.1)	5.1	-	+FL 150	-	370539.7 N 1270154.0 E (R 173 SEL/D20, R 134 WNG/D35)	-	RNAV 1	-
006	TF	S1731	-	156 (148.3)	11.9	-	+FL 190	-	365529.2 N 1270943.6 E (R 167 SEL/D31, R 156 SOT/D22)	-	RNAV 1	-
007	TF	OSPOT	-	128 (119.9)	10.4	-	+FL 230	-	365018.1 N 1272054.9 E (R 157 SEL/D40, R 143 SOT/D22)	-	RNAV 1	-

Serial Number	Path Descriptor	Waypoint Identifier	Fly-over	Course/Track °M(°T)	Distance (NM)	Turn direction	Altitude (ft)	Speed (kt)	Coordinates	VPA/TCH	Navigation specification	Remarks
001	CF	S1703	-	15L-139(131.3) 15R-138(129.7)	7.7	R	-	-	372218.4 N 1263507.0 E (R 269 SEL/D17, R 143 NCN/D11)	-	RNAV 1	-
002	TF	S1704	-	169 (160.9)	6.4	-	-5 000	-	371616.3 N 1263743.8 E (R 247 SEL/D17, R 153 NCN/D16)	-	RNAV 1	-
003	TF	JUNHA	-	094 (086.1)	12.5	-	@10 000	-	371706.9 N 1265322.3 E (R 202 SEL/D8, R 337 SOT/D13)	-	RNAV 1	-
004	TF	S1740	-	091 (083.5)	11.2	-	@10 000	-	371822.7 N 1270721.4 E (R 133 SEL/D11, R 027 SOT/D13)	-	RNAV 1	-
005	TF	EGOBA	-	056 (048.4)	16.4	-	-FL 150	-	372914.7 N 1272245.9 E (R 086 SEL/D22, R 043 SOT/D29)	-	RNAV 1	-

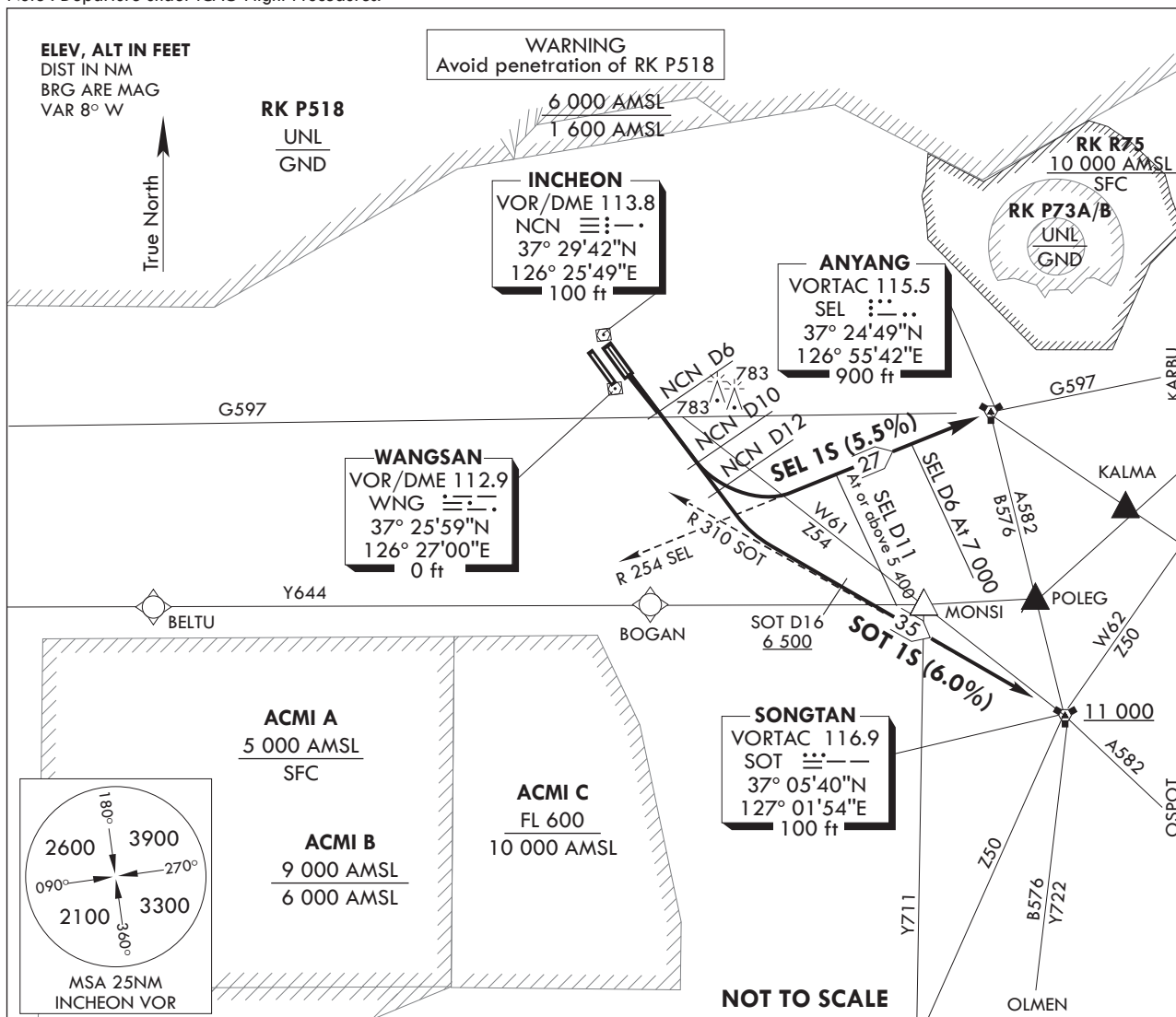
STANDARD DEPARTURE CHART
INSTRUMENT (SID) - ICAO

TRANSITION ALT 14 000
TRANSITION LVL FL 140

SEOUL DEP	125.15
	121.4
	124.8
INCHEON TWR	118.2
	118.8

SEOUL/Incheon Intl(RKSI)
RWY 15L/R
SEL 1S, SOT 1S

Note : Departure under ICAO Flight Procedures.



GENERAL INFORMATION

- Climb gradient in excess of 3.3% necessary and also strict adherence to climb gradient required for airspace, ATC and noise abatement purposes.
 - SEL 1S minimum climb gradient 5.5% to 7 000 ft.
 - SOT 1S minimum climb gradient 6% to FL 170
- If unable to comply with flight restrictions, advise ATC well before departure for alternatives.
- Step climb : Due to interaction with other routes, do NOT climb above 7 000 ft unless cleared by ATC.

SEL(ANYANG) ONE SIERRA DEPARTURE

TAKE OFF RWY 15L : Climb on R 153 NCN , thence...

TAKE OFF RWY 15R : Climb straight ahead, at NCN D6 turn LEFT onto R 153 NCN, thence...
at NCN D10 turn LEFT to intercept R 254 SEL and proceed to SEL, fly by SEL.
Cross SEL D11 at or above 5 400 ft and SEL D6 at 7 000 ft until instructed by ATC.

SOT(SONGTAN) ONE SIERRA DEPARTURE

TAKE OFF RWY 15L : Climb on R 153 NCN, thence...

TAKE OFF RWY 15R : Climb straight ahead, at NCN D6 turn LEFT onto R 153 NCN, thence...
at NCN D12 turn LEFT to intercept R 310 SOT and proceed SOT. At or above 6 500 ft
by SOT D16, at or above 11 000 ft by SOT and at or above FL150 by
SOT D8 on A582 or B576. Maintain 7 000 ft until instructed by ATC.

Change : MSA.

INTENTIONALLY

LEFT

BLANK

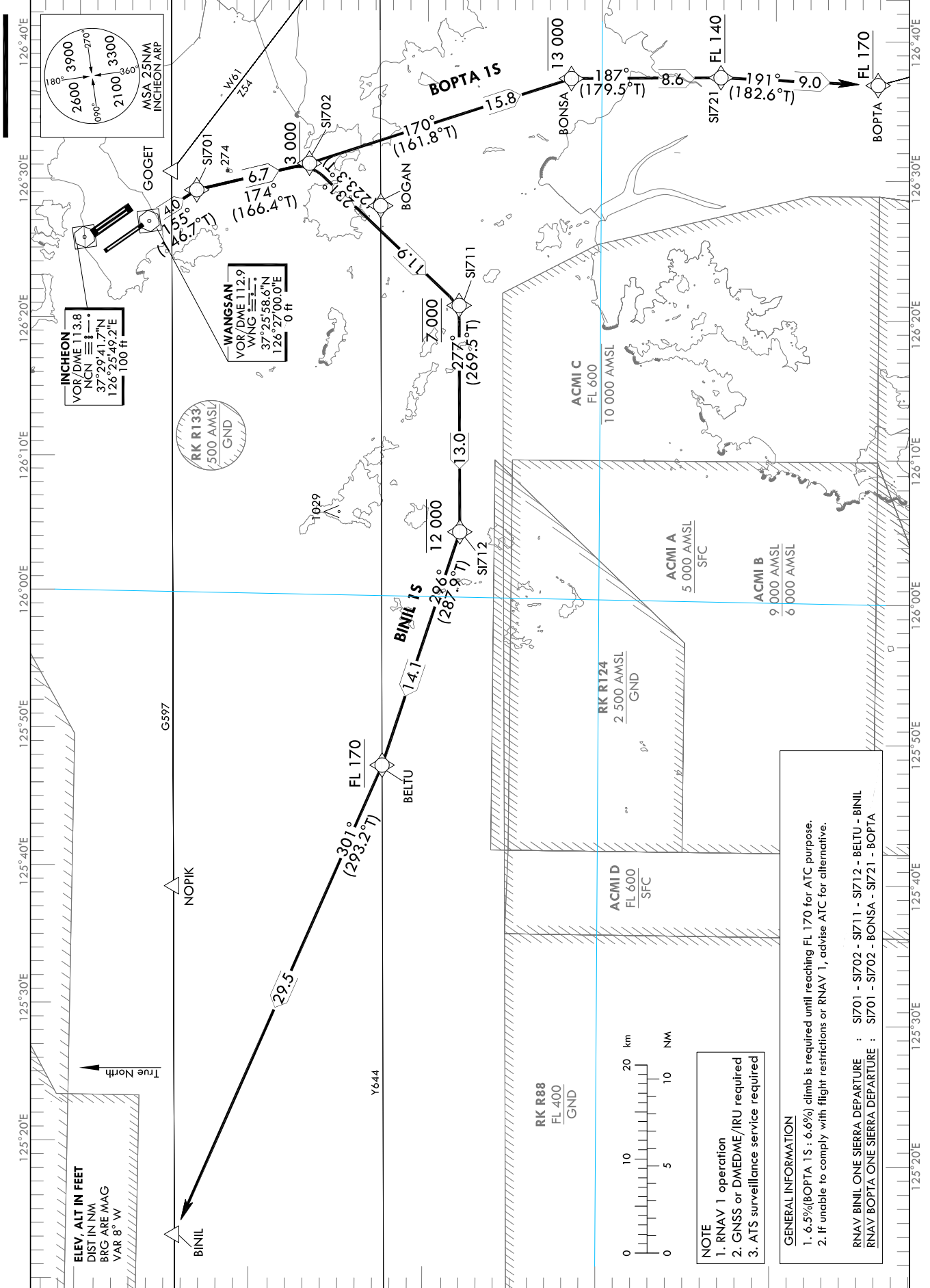
STANDARD DEPARTURE CHART
INSTRUMENT (SID) - ICAO

TRANSITION ALT 14 000
TRANSITION LVL FL 140

SEOUL DEP 125.15
121.4
124.8
INCHEON TWR 118.2
118.8

SEOUL/Incheon Intl(RKSI)
RWY 16
RNAV BINIL 1S
RNAV BOPTA 1S

Note : Departure under ICAO Flight Procedures.



Change :MSA.

SEOUL/Incheon Intl(RKSI)
RWY 16
RNAV BINIL 15, RNAV BOPTA 15

AERONAUTICAL DATA TABULATION

Standard Instrument Departure Procedure Coding Tables

Serial Number	Path Descriptor	Waypoint Identifier	Fly-over	Course/Track °M(°T)	Distance (NM)	Turn direction	Altitude (ft)	Speed (kt)	Coordinates	VPA/TCH	Navigation specification	Remarks
001	CF	S1701	-	155 (146.7)	4.0	R	-	-	372315.5 N 1262915.7 E (R 274 SEL/D21, R 154 WNG/D3)	-	RNAV 1	-
002	TF	S1702	-	174 (166.4)	6.7	-	+3 000	-	371647.0 N 1263113.0 E (R 256 SEL/D21, R 168 WNG/D10)	-	RNAV 1	-
003	TF	S1711	-	231 (223.3)	11.9	-	@7 000	-	370807.8 N 1262103.5 E (R 247 SEL/D32, R 203 WNG/D18)	-	RNAV 1	-
004	TF	S1712	-	277 (269.5)	13.0	-	-12 000	-	370759.2 N 1260448.1 E (R 256 SEL/D44, R 281 SOT/D46)	-	RNAV 1	-
005	TF	BELTU	-	296 (287.9)	14.1	-	+FL 170	-	371218.2 N 1254759.0 E (R 265 SEL/D36, R 285 SOT/D60)	-	RNAV 1	-
006	TF	BINIL	-	301 (293.2)	29.5	-	-	-	372349.2 N 1251359.3 E (R 278 SEL/D81, R 290 SOT/D88)	-	RNAV 1	-

Serial Number	Path Descriptor	Waypoint Identifier	Fly-over	Course/Track °M(°T)	Distance (NM)	Turn direction	Altitude (ft)	Speed (kt)	Coordinates	VPA/TCH	Navigation specification	Remarks
001	CF	S1701	-	155 (146.7)	4.0	R	-	-	372315.5 N 1262915.7 E (R 274 SEL/D21, R 154 WNG/D3)	-	RNAV 1	-
002	TF	S1702	-	174 (166.4)	6.7	-	+3 000	-	371647.0 N 1263113.0 E (R 256 SEL/D21, R 168 WNG/D10)	-	RNAV 1	-
003	TF	BONSA	-	170 (161.8)	15.8	-	-13 000	-	370144.4 N 1263723.0 E (R 220 SEL/D27, R 267 SOT/D20)	-	RNAV 1	-
004	TF	S1721	-	187 (179.5)	8.6	-	+FL 140	-	365308.6 N 1263729.0 E (R 213 SEL/D35, R 245 SOT/D23)	-	RNAV 1	-
005	TF	BOPTA	-	191 (182.6)	9.0	-	+FL 170	-	364406.0 N 1263658.0 E (R 208 SEL/D43, R 231 SOT/D29)	-	RNAV 1	-

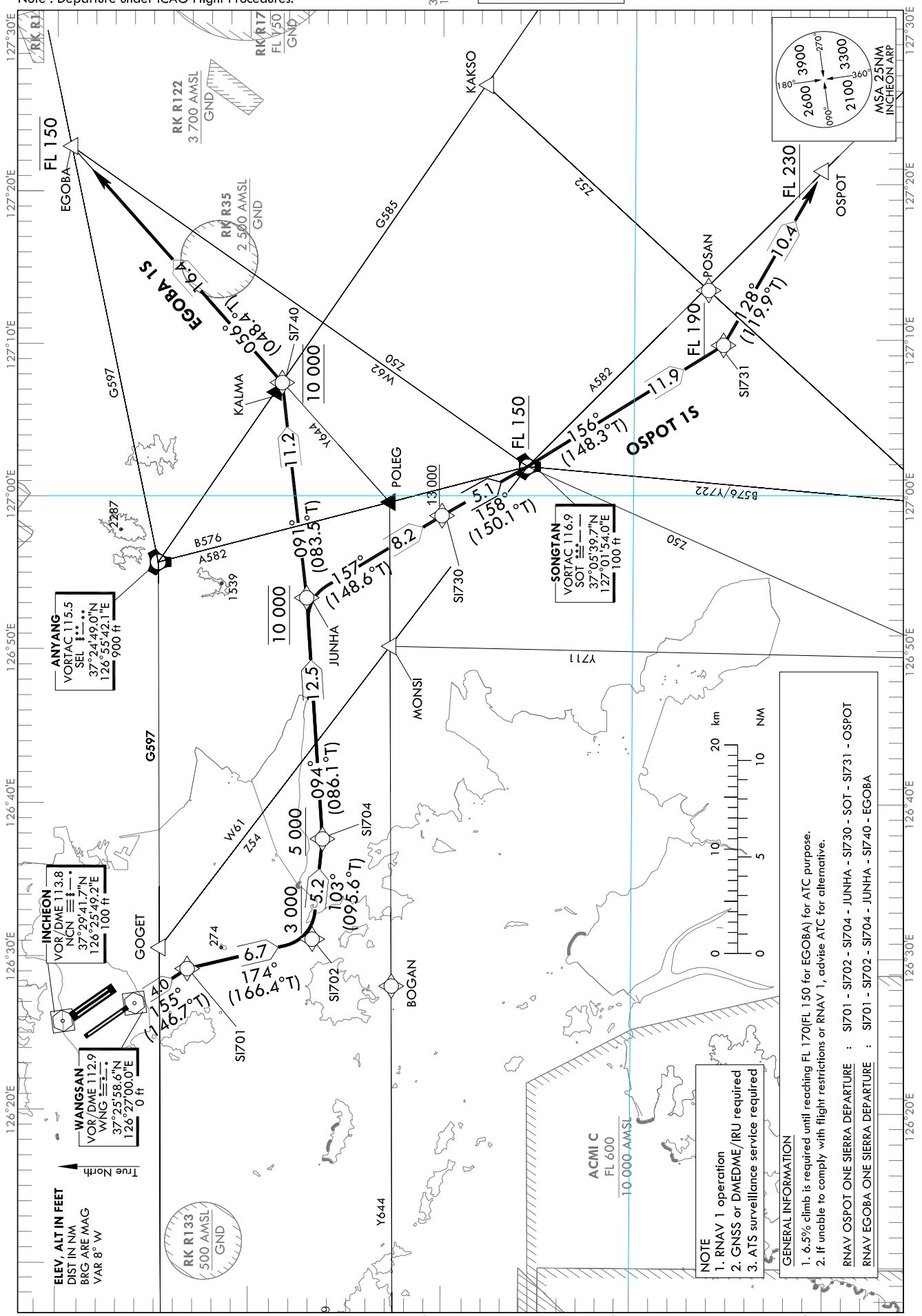
STANDARD DEPARTURE CHART
INSTRUMENT (SID) - ICAO

TRANSITION ALT 14 000
TRANSITION LVL FL 140

SEOUL DEP	125.15
	121.4
	124.8
INCHEON TWR	118.2
	118.8

SEOUL/Incheon Intl(RKSI)
RWY 16
RNAV OSPOT 1S, RNAV EGOBA 1S

Note : Departure under ICAO Flight Procedures.



Change : MSA.

SEOUL/Incheon Intl(RKSI)
RWY 16
RNAV OSPOT 1S, RNAV EGOBA 1S

AERONAUTICAL DATA TABULATION

Standard Instrument Departure Procedure Coding Tables

Serial Number	Path Descriptor	Waypoint Identifier	Fly-over	Course/Track °M(°T)	Distance (NM)	Turn direction	Altitude (ft)	Speed (kt)	Coordinates	VPA/TCH	Navigation specification	Remarks
001	CF	S1701	-	155 (146.7)	4.0	R	-	-	37231.5 N 126291.57 E (R 274 SEL/D21, R 154 WNG/D3)	-	RNAV 1	-
002	TF	S1702	-	174 (166.4)	6.7	-	+3 000	-	371647.0 N 1263113.0 E (R 256 SEL/D21, R 168 WNG/D10)	-	RNAV 1	-
003	TF	S1704	-	103 (095.6)	5.2	-	+5 000	-	371616.3 N 1263743.8 E (R 247 SEL/D17, R 146 WNG/D13)	-	RNAV 1	-
004	TF	JUNHA	-	094 (086.1)	12.5	-	@10 000	-	371706.9 N 1265322.3 E (R 202 SEL/D8, R 337 SOT/D13)	-	RNAV 1	-
005	TF	S1730	-	157 (148.6)	8.2	-	+13 000	-	371005.7 N 1265843.0 E (R 179 SEL/D15, R 338 SOT/D5)	-	RNAV 1	-
006	TF	SOT	-	158 (150.1)	5.1	-	+FL 150	-	370539.7 N 1270154.0 E (R 173 SEL/D20, R 134 WNG/D35)	-	RNAV 1	-
007	TF	S1731	-	156 (148.3)	11.9	-	+FL 190	-	365529.2 N 1270943.6 E (R 167 SEL/D31, R 156 SOT/D22)	-	RNAV 1	-
008	TF	OSPOT	-	128 (119.9)	10.4	-	+FL 230	-	365018.1 N 1272054.9 E (R 157 SEL/D40, R 143 SOT/D22)	-	RNAV 1	-

Serial Number	Path Descriptor	Waypoint Identifier	Fly-over	Course/Track °M(°T)	Distance (NM)	Turn direction	Altitude (ft)	Speed (kt)	Coordinates	VPA/TCH	Navigation specification	Remarks
001	CF	S1701	-	155 (146.7)	4.0	R	-	-	37231.5 N 126291.57 E (R 274 SEL/D21, R 154 WNG/D3)	-	RNAV 1	-
002	TF	S1702	-	174 (166.4)	6.7	-	+3 000	-	371647.0 N 1263113.0 E (R 256 SEL/D21, R 168 WNG/D10)	-	RNAV 1	-
003	TF	S1704	-	103 (095.6)	5.2	-	+5 000	-	371616.3 N 1263743.8 E (R 247 SEL/D17, R 146 WNG/D13)	-	RNAV 1	-
004	TF	JUNHA	-	094 (086.1)	12.5	-	@10 000	-	371706.9 N 1265322.3 E (R 202 SEL/D8, R 337 SOT/D13)	-	RNAV 1	-
005	TF	S1740	-	091 (083.5)	11.2	-	@10 000	-	371822.7 N 1270721.4 E (R 133 SEL/D11, R 027 SOT/D13)	-	RNAV 1	-
006	TF	EGOBA	-	056 (048.4)	16.4	-	-FL 150	-	372914.7 N 1272245.9 E (R 086 SEL/D22, R 043 SOT/D29)	-	RNAV 1	-

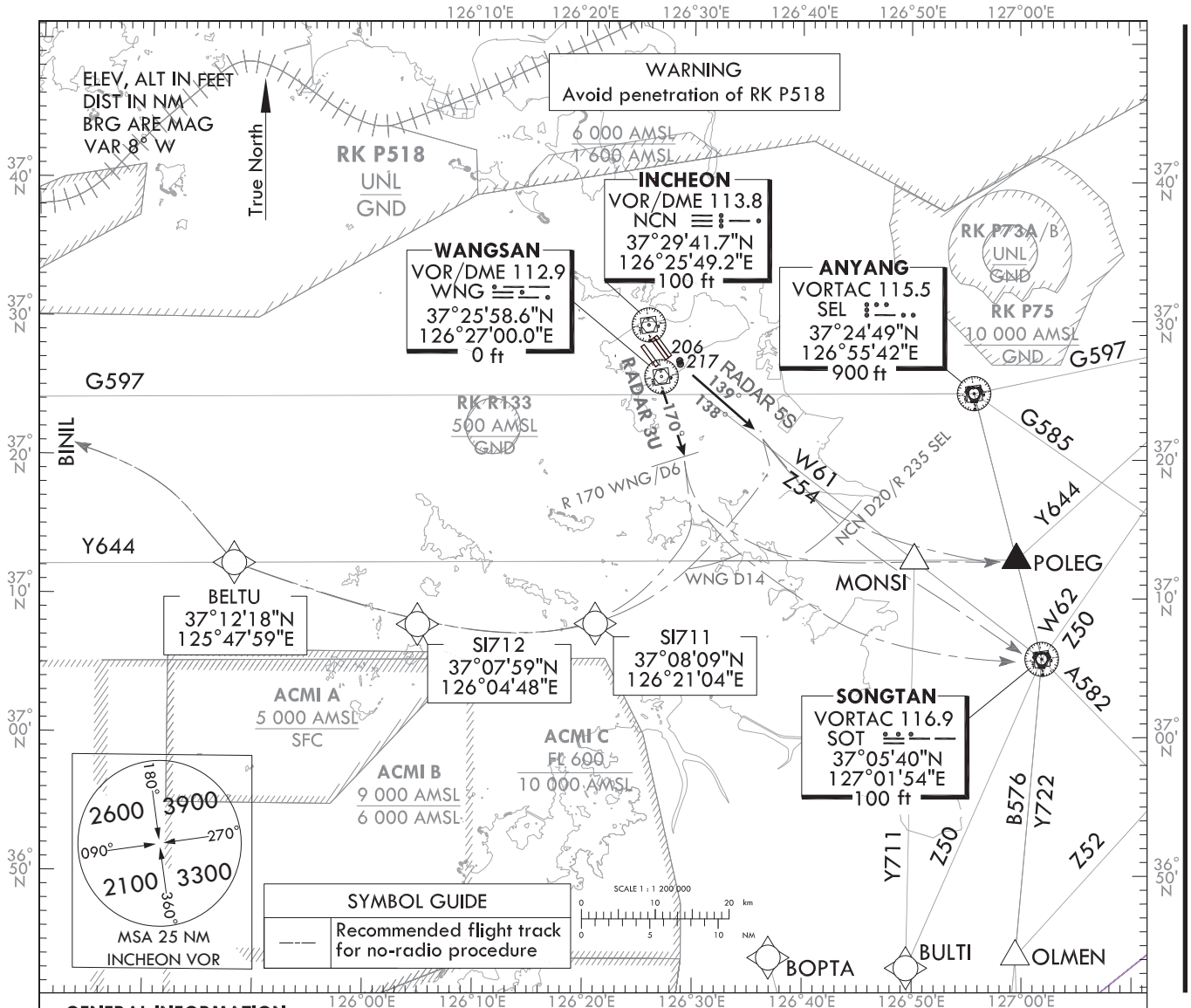
**STANDARD DEPARTURE CHART
INSTRUMENT (SID) - ICAO**

SEOUL DEP	125.15
	121.4
	124.8
INCHEON TWR	118.2
	118.8

TRANSITION ALT	14 000
TRANSITION LVL	FL 140

**SEOUL/Incheon Intl(RKSI)
RWY 15L/R RADAR 5S
RWY 16 RADAR 3U**

Note : Departure under ICAO Flight Procedures.



GENERAL INFORMATION

- 6.0% climb gradient required until FL 150 for ATC and airspace purpose.
- Pilot shall use caution not to penetrate prohibited or restricted areas around airport.
- Aircraft may experience delay due to airspace use coordination, traffic volume, and so on.

RADAR FIVE SIERRA DEPARTURE

TAKE OFF RWY 15L : Climb heading 139°, expect radar vector to airway. Maintain 7 000 ft until instructed by ATC.
TAKE OFF RWY 15R : Climb heading 138°, expect radar vector to airway. Maintain 7 000 ft until instructed by ATC.

No radio procedure : If no radio contact with ATC, squawk 7 600 , and unless otherwise instructed by ATC, proceed as follows.

- to SOT via R 315 SOT for A582, B576
- to intercept Y644 to POLEG, EGOBA, KARBU for G597
- to intercept R 290 SOT to BINIL or proceed direct to SI711, SI712, BELTU to BINIL for G597 as appropriate.

Pilot shall proceed as described above prior to reaching NCN D20 or R 235 SEL due to airspace.

RADAR THREE UNIFORM DEPARTURE

TAKE OFF RWY 16 : Climb heading 170, expect radar vector to airway. Maintain 7 000 ft until instructed by ATC.

No radio procedure : If no radio contact with ATC, squawk 7 600, and unless otherwise instructed by ATC proceed as follows.

- to SOT via R 307 SOT for A582, B576
- to intercept Y644 to POLEG, EGOBA, KARBU for G597
- to intercept R 290 SOT to BINIL or proceed direct to SI711, SI712, BELTU to BINIL for G597 as appropriate.

Pilot shall proceed as described above prior to reaching WNG D14 due to airspace.

Change : SID procedure(RADAR 4S → RADAR 5S)

INTENTIONALLY

LEFT

BLANK

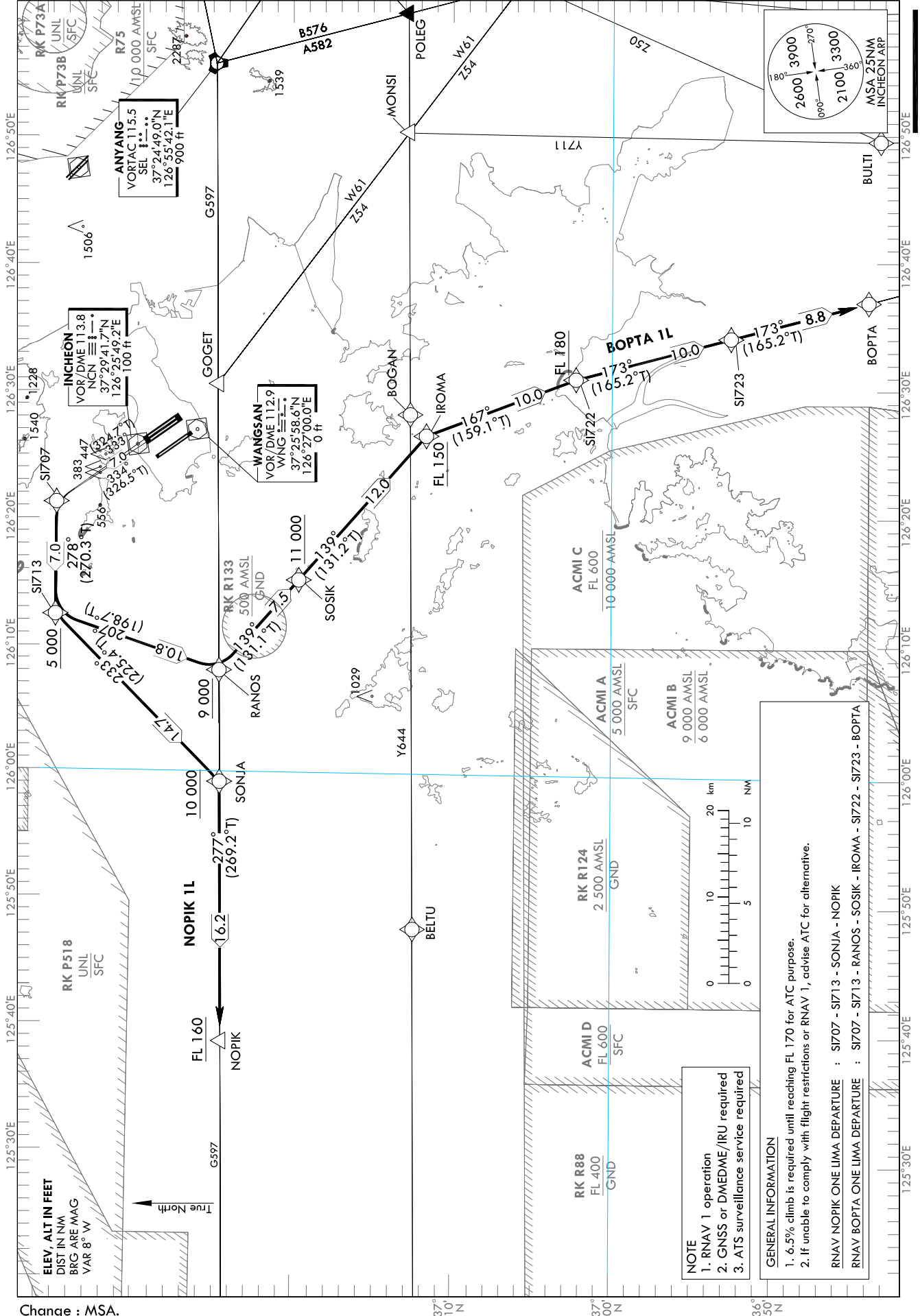
STANDARD DEPARTURE CHART
INSTRUMENT (SID) - ICAO

TRANSITION ALT 14 000
TRANSITION LVL FL 140

SEOUL DEP 125.15
121.4
124.8
INCHEON TWR 118.2
118.8

SEOUL/Incheon Intl(RKSI)
RWY 33L/R
RNAV NOPIK 1L
RNAV BOPTA 1L

Note : Departure under ICAO Flight Procedures.



Change : MSA.

SEOUL/Incheon Intl(RKSI)
RWY 33L/R
RNAV NOPIK 1L
RNAV BOPTA 1L

AERONAUTICAL DATA TABULATION

Standard Instrument Departure Procedure Coding Tables

RNAV NOPIK 1L												
Serial Number	Path Descriptor	Waypoint Identifier	Fly-over	Course/Track °M(°T)	Distance (NM)	Turn direction	Altitude (ft)	Speed (kt)	Coordinates	VPA/TCH	Navigation specification	Remarks
001	CF	S1707	-	33L-334(326.5) 33R-333(324.7)	7.0	L	-	-	373445.1 N 1262119.0 E (R 298 SEL/D29, R 333 NGN/D6)	-	RNAV 1	-
002	TF	S1713	-	278 (270.3)	7.0	-	+5 000	-	373446.7 N 1261230.6 E (R 294 SEL/D36, R 304 NGN/D12)	-	RNAV 1	-
003	TF	SONJA	-	233 (225.4)	14.7	-	+10 000	-	372426.5 N 1255924.4 E (R 278 SEL/D45, R 299 SOT/D53)	-	RNAV 1	-
004	TF	NOPIK	-	277 (269.2)	16.2	-	+FL 160	-	372412.0 N 1253905.0 E (R 278 SEL/D61, R 294 SOT/D69)	-	RNAV 1	-

RNAV BOPTA 1L												
Serial Number	Path Descriptor	Waypoint Identifier	Fly-over	Course/Track °M(°T)	Distance (NM)	Turn direction	Altitude (ft)	Speed (kt)	Coordinates	VPA/TCH	Navigation specification	Remarks
001	CF	S1707	-	33L-334(326.5) 33R-333(324.7)	7.0	L	-	-	373445.1 N 1262119.0 E (R 298 SEL/D29, R 333 NGN/D6)	-	RNAV 1	-
002	TF	S1713	-	278 (270.3)	7.0	-	+5 000	-	373446.7 N 1261230.6 E (R 294 SEL/D36, R 304 NGN/D12)	-	RNAV 1	-
003	TF	RANOS	-	207 (198.7)	10.8	-	+9 000	-	372431.4 N 1260809.0 E (R 278 SEL/D38, R 258 NGN/D15)	-	RNAV 1	-
004	TF	SOSIK	-	139 (131.1)	7.5	-	+11 000	-	371935.0 N 1261514.0 E (R 269 SEL/D33, R 299 SOT/D40)	-	RNAV 1	-
005	TF	IROMA	-	139 (131.2)	12.0	-	+FL 150	-	371139.7 N 1262632.1 E (R 249 SEL/D27, R 290 SOT/D29)	-	RNAV 1	-
006	TF	S1722	-	167 (159.1)	10.0	-	+FL 180	-	370219.6 N 1263058.2 E (R 229 SEL/D30, R 270 SOT/D25)	-	RNAV 1	-
007	TF	S1723	-	173 (165.2)	10.0	-	-	-	365238.3 N 1263410.0 E (R 216 SEL/D37, R 248 SOT/D26)	-	RNAV 1	-
008	TF	BOPTA	-	173 (165.2)	8.8	-	-	-	364406.0 N 1263658.0 E (R 208 SEL/D43, R 231 SOT/D29)	-	RNAV 1	-

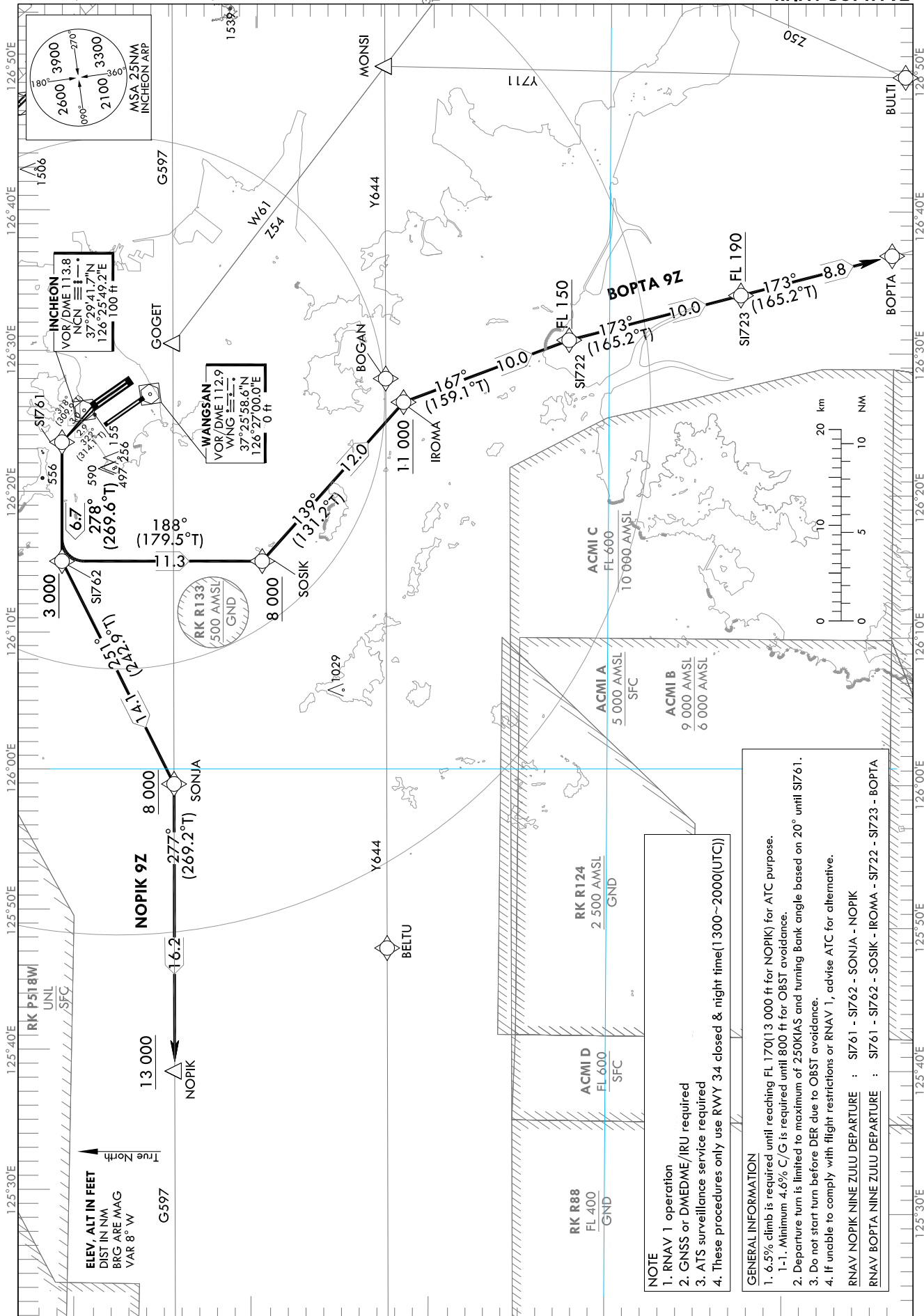
STANDARD DEPARTURE CHART
INSTRUMENT (SID) - ICAO

TRANSITION ALT 14 000
TRANSITION LVL FL 140

SEOUL DEP 125.15
121.4
124.8
INCHEON TWR 118.2
118.8

SEOUL/Incheon Intl(RKSI)
RWY 33L/R
RNAV NOPIK 9Z
RNAV BOPTA 9Z

Note : Departure under ICAO Flight Procedures.



Change : New procedure.

SEOUL/Incheon Intl(RKSI)
RWY 33L/R
RNAV NOPIK 9Z, RNAV BOPTA 9Z

AERONAUTICAL DATA TABULATION

Standard Instrument Departure Procedure Coding Tables

Serial Number	Path Descriptor	Waypoint Identifier	Fly-over	Course/Track °M(°T)	Distance (NM)	Turn direction	Altitude (ft)	Speed (kt)	Coordinates	VPA/TCH	Navigation specification	Remarks
001	CF	S1761	-	33L-322(314.1) 33R-318(309.9)	33L-2.9 33R-3.0	L	-	-250	373056.1 N 1262333.3 E (R 292 SEL/D26, R 339 WNG/D6)	-	RNAV 1	Bank angle 20°
002	TF	S1762	-	278 (269.6)	6.7	-	+3 000	-	373053.2 N 1261507.3 E (R 289 SEL/D33, R 305 WNG/D11)	-	RNAV 1	-
003	TF	SONJA	-	251 (242.9)	14.1	-	+8 000	-	372426.5 N 1255924.4 E (R 278 SEL/D45, R 274 WNG/D22)	-	RNAV 1	-
004	TF	NOPIK	-	277 (269.2)	16.2	-	+13 000	-	372412.0 N 1253905.0 E (R 278 SEL/D61, R 294 SOT/D69)	-	RNAV 1	-

Serial Number	Path Descriptor	Waypoint Identifier	Fly-over	Course/Track °M(°T)	Distance (NM)	Turn direction	Altitude (ft)	Speed (kt)	Coordinates	VPA/TCH	Navigation specification	Remarks
001	CF	S1761	-	33L-322(314.1) 33R-318(309.9)	33L-2.9 33R-3.0	L	-	-250	373056.1 N 1262333.3 E (SEL R-292/D26, WNG R-339/D6)	-	RNAV 1	Bank angle 20°
002	TF	S1762	-	278 (269.6)	6.7	-	+3 000	-	373053.2 N 1261507.3 E (SEL R-289/D33, WNG R-305/D11)	-	RNAV 1	-
003	TF	SOSIK	-	188 (179.5)	11.3	-	+8 000	-	371935.0 N 1261514.0 E (SEL R-269/D33, SOT R-299/D40)	-	RNAV 1	-
004	TF	IROMA	-	139 (131.2)	12.0	-	+11 000	-	371139.7 N 1262632.1 E (SEL R-249/D27, SOT R-290/D29)	-	RNAV 1	-
005	TF	S1722	-	167 (159.1)	10.0	-	+FL 150	-	370219.6 N 1263058.2 E (SEL R-229/D30, SOT R-270/D25)	-	RNAV 1	-
006	TF	S1723	-	173 (165.2)	10.0	-	+FL 190	-	365238.3 N 1263410.0 E (SEL R-216/D37, SOT R-248/D26)	-	RNAV 1	-
007	TF	BOPTA	-	173 (165.2)	8.8	-	-	-	364406.0 N 1263638.0 E (SEL R-208/D43, SOT R-231/D29)	-	RNAV 1	-

Change : New procedure.

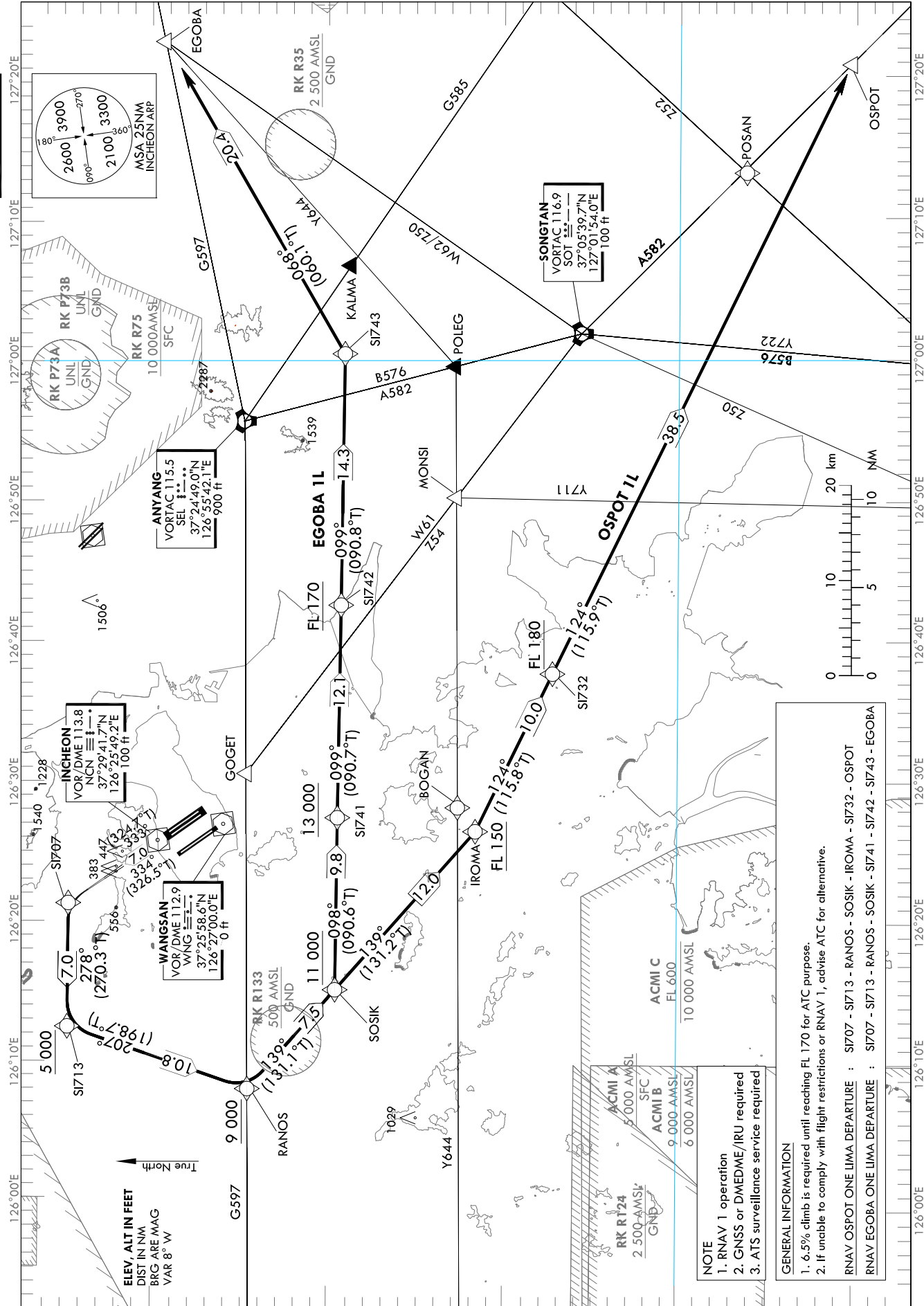
STANDARD DEPARTURE CHART
INSTRUMENT (SID) - ICAO

TRANSITION ALT 14 000
TRANSITION LVL FL 140

SEOUL DEP 125.15
121.4
124.8
INCHEON TWR 118.2
118.8

SEOUL/Incheon Intl(RKSI)
RWY 33L/R
RNAV OSPOT 1L
RNAV EGOBA 1L

Note : Departure under ICAO Flight Procedures.



Change : MSA.

NOTE
1. RNAV 1 operation
2. GNSS or DMEDME/IRU required
3. ATS surveillance service required

GENERAL INFORMATION
1. 6.5% climb is required until reaching FL 170 for ATC purpose.
2. If unable to comply with flight restrictions or RNAV 1, advise ATC for alternative.
RNAV OSPOT ONE LIMA DEPARTURE : S1707 - S1713 - RANOS - SOSIK - IROMA - S1732 - OSPOT
RNAV EGOBA ONE LIMA DEPARTURE : S1707 - S1713 - RANOS - SOSIK - S1741 - S1742 - S1743 - EGOBA

SEOUL/Incheon Intl(RKSI)
RWY 33L/R
RNAV OSPOT 1L, RNAV EGOBA 1L

AERONAUTICAL DATA TABULATION

Standard Instrument Departure Procedure Coding Tables

Serial Number	Path Descriptor	Waypoint Identifier	Fly-over	Course/Track °M(T)	Distance (NM)	Turn direction	Altitude (ft)	Speed (kt)	Coordinates	VPA/TCH	Navigation specification	Remarks
001	CF	S1707	-	33L-334(326.5) 33R-333(324.7)	7.0	L	-	-	373445.1 N 1262119.0 E (R 298 SEL/D29, R 333 NCN/D6)	-	RNAV 1	-
002	TF	S1713	-	278 (270.3)	7.0	-	+5 000	-	373446.7 N 1261230.6 E (R 294 SEL/D36, R 304 NCN/D12)	-	RNAV 1	-
003	TF	RANOS	-	207 (198.7)	10.8	-	+9 000	-	372431.4 N 1260809.0 E (R 278 SEL/D38, R 258 NCN/D15)	-	RNAV 1	-
004	TF	SOSIK	-	139 (131.1)	7.5	-	+11 000	-	371935.0 N 1261514.0 E (R 269 SEL/D33, R 299 SOT/D40)	-	RNAV 1	-
005	TF	IROMA	-	139 (131.2)	12.0	-	+FL 150	-	371139.7 N 1262632.1 E (R 249 SEL/D27, R 290 SOT/D29)	-	RNAV 1	-
006	TF	S1732	-	124 (115.8)	10.0	-	+FL 180	-	370718.5 N 1263744.9 E (R 227 SEL/D23, R 283 SOT/D19)	-	RNAV 1	-
007	TF	OSPOT	-	124 (115.9)	38.5	-	-	-	365018.1 N 1272054.9 E (R 157 SEL/D40, R 143 SOT/D22)	-	RNAV 1	-

Serial Number	Path Descriptor	Waypoint Identifier	Fly-over	Course/Track °M(T)	Distance (NM)	Turn direction	Altitude (ft)	Speed (kt)	Coordinates	VPA/TCH	Navigation specification	Remarks
001	CF	S1707	-	33L-334(326.5) 33R-333(324.7)	7.0	L	-	-	373445.1 N 1262119.0 E (R 298 SEL/D29, R 333 NCN/D6)	-	RNAV 1	-
002	TF	S1713	-	278 (270.3)	7.0	-	+5 000	-	373446.7 N 1261230.6 E (R 294 SEL/D36, R 304 NCN/D12)	-	RNAV 1	-
003	TF	RANOS	-	207 (198.7)	10.8	-	+9 000	-	372431.4 N 1260809.0 E (R 278 SEL/D38, R 258 NCN/D15)	-	RNAV 1	-
004	TF	SOSIK	-	139 (131.1)	7.5	-	+11 000	-	371935.0 N 1261514.0 E (R 269 SEL/D33, R 299 SOT/D40)	-	RNAV 1	-
005	TF	S1741	-	098 (090.6)	9.8	-	+13 000	-	371928.6 N 1262731.1 E (R 265 SEL/D23, R 305 SOT/D31)	-	RNAV 1	-
006	TF	S1742	-	099 (090.7)	12.1	-	+FL 170	-	371918.2 N 1264238.8 E (R 250 SEL/D12, R 320 SOT/D21)	-	RNAV 1	-
007	TF	S1743	-	099 (090.8)	14.3	-	-	-	371905.3 N 1270031.4 E (R 154 SEL/D7, R 003 SOT/D14)	-	RNAV 1	-
008	TF	EGOBA	-	068 (060.1)	20.4	-	-	-	372914.7 N 1272245.9 E (R 086 SEL/D22, R 043 SOT/D29)	-	RNAV 1	-

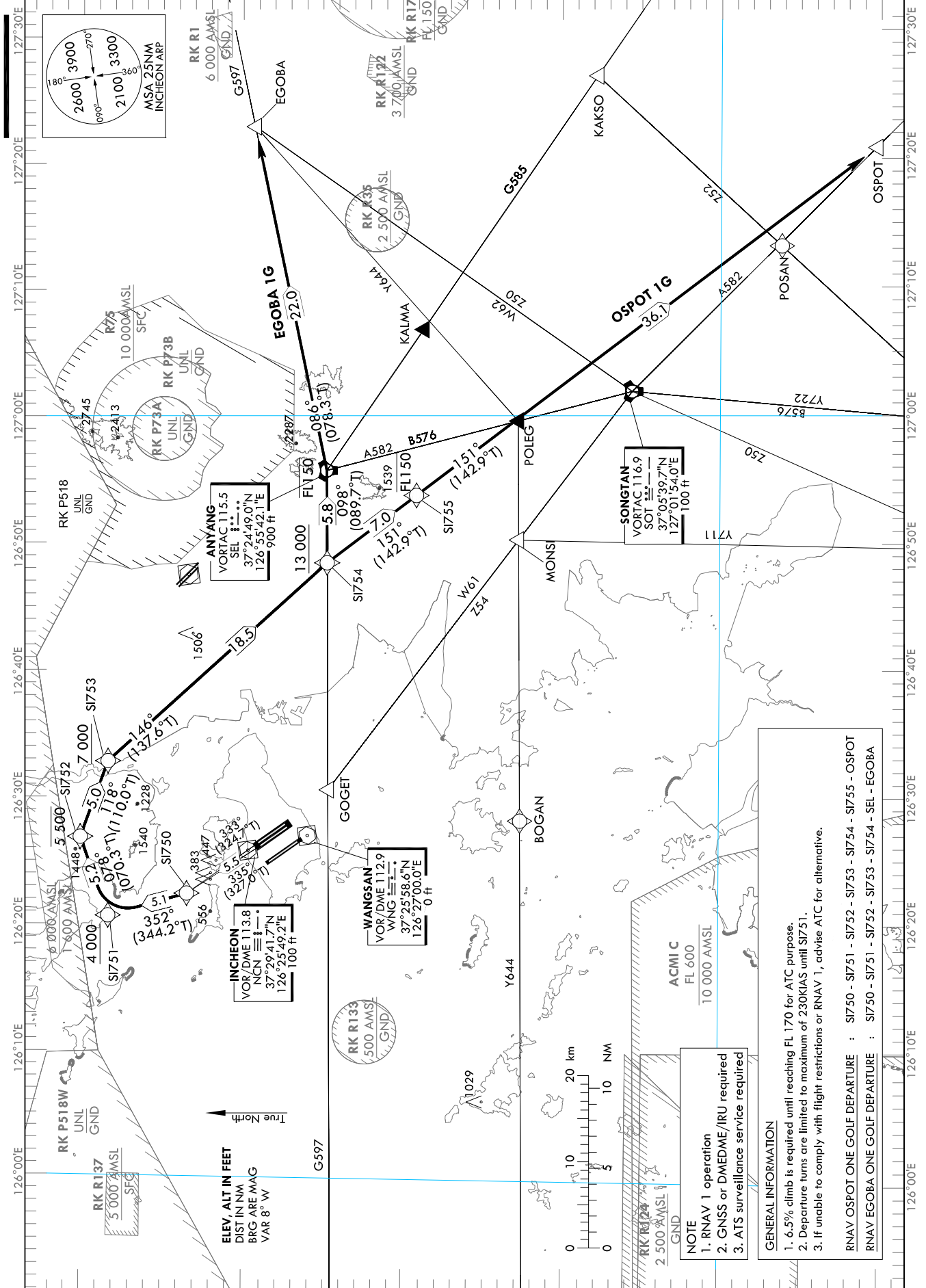
STANDARD DEPARTURE CHART
INSTRUMENT (SID) - ICAO

TRANSITION ALT 14 000
TRANSITION LVL FL 140

SEOUL DEP	125.15
	121.4
	124.8
INCHEON TWR	118.2
	118.8

SEOUL/Incheon Intl(RKSI)
RWY 33L/R
RNAV OSPOT 1G
RNAV EGOBA 1G

Note : Departure under ICAO Flight Procedures.



Change : MSA.

NOTE
1. RNAV 1 operation
2. GNSS or DMEDME/IRU required
3. ATS surveillance service required

GENERAL INFORMATION

- 6.5% climb is required until reaching FL 170 for ATC purpose.
- Departure turns are limited to maximum of 230KIAS until S1751.
- If unable to comply with flight restrictions or RNAV 1, advise ATC for alternative.

RNAV OSPOT ONE GOLF DEPARTURE : S1750 - S1751 - S1752 - S1753 - S1754 - S1755 - OSPOT
RNAV EGOBA ONE GOLF DEPARTURE : S1750 - S1751 - S1752 - S1753 - S1754 - SEL - EGOBA

SEOUL/Incheon Intl(RKSI)
RWY 33L/R

RNAV OSPOT 1G, RNAV EGOBA 1G

AERONAUTICAL DATA TABULATION

Standard Instrument Departure Procedure Coding Tables

Serial Number	Path Descriptor	Waypoint Identifier	Fly-over	Course/Track °M(T)	Distance (NM)	Turn direction	Altitude (ft)	Speed (kt)	Coordinates	VPA/TCH	Navigation specification	Remarks
001	CF	S1750	-	331-335(327.0) 338-333(324.7)	5.5	R	-	-230	373331.6 N 1262224.5 E (R 296 SEL/D28, R 333 NCN/D5)	-	RNAV 1	-
002	TF	S1751	-	352 (344.2)	5.1	-	+4 000	-230	373827.4 N 1262039.1 E (R 304 SEL/D31, R 343 NCN/D10)	-	RNAV 1	-
003	TF	S1752	-	078 (070.3)	5.2	-	-5 500	-	374012.7 N 1262650.5 E (R 312 SEL/D28, R 012 NCN/D11)	-	RNAV 1	-
004	TF	S1753	-	118 (110.0)	5.0	-	+7 000	-	373829.2 N 1263248.6 E (R 315 SEL/D23, R 040 NCN/D10)	-	RNAV 1	-
005	TF	S1754	-	146 (137.6)	18.5	-	+13 000	-	372447.5 N 1264826.5 E (R 278 SEL/D6, R 339 SOT/D22)	-	RNAV 1	-
006	TF	S1755	-	151 (142.9)	7.0	-	-FL 150	-	371911.6 N 1265344.6 E (R 203 SEL/D6, R 342 SOT/D15)	-	RNAV 1	-
007	TF	OSPOT	-	151 (142.9)	36.1	-	-	-	365018.1 N 1272054.9 E (R 157 SEL/D40, R 143 SOT/D22)	-	RNAV 1	-

Serial Number	Path Descriptor	Waypoint Identifier	Fly-over	Course/Track °M(T)	Distance (NM)	Turn direction	Altitude (ft)	Speed (kt)	Coordinates	VPA/TCH	Navigation specification	Remarks
001	CF	S1750	-	331-335(327.0) 338-333(324.7)	5.5	R	-	-230	373331.6 N 1262224.5 E (R 296 SEL/D28, R 333 NCN/D5)	-	RNAV 1	-
002	TF	S1751	-	352 (344.2)	5.1	-	+4 000	-230	373827.4 N 1262039.1 E (R 304 SEL/D31, R 343 NCN/D10)	-	RNAV 1	-
003	TF	S1752	-	078 (070.3)	5.2	-	-5 500	-	374012.7 N 1262650.5 E (R 312 SEL/D28, R 012 NCN/D11)	-	RNAV 1	-
004	TF	S1753	-	118 (110.0)	5.0	-	+7 000	-	373829.2 N 1263248.6 E (R 315 SEL/D23, R 040 NCN/D10)	-	RNAV 1	-
005	TF	S1754	-	146 (137.6)	18.5	-	+13 000	-	372447.5 N 1264826.5 E (R 278 SEL/D6, R 339 SOT/D22)	-	RNAV 1	-
006	TF	SEL	-	098 (089.7)	5.8	-	-FL 150	-	372449.0 N 1265542.1 E (R 353 SOT/D20, R 109 NCN/D24)	-	RNAV 1	-
007	TF	EGOBA	-	086 (078.3)	22.0	-	-	-	372914.7 N 1272245.9 E (R 086 SEL/D22, R 043 SOT/D29)	-	RNAV 1	-

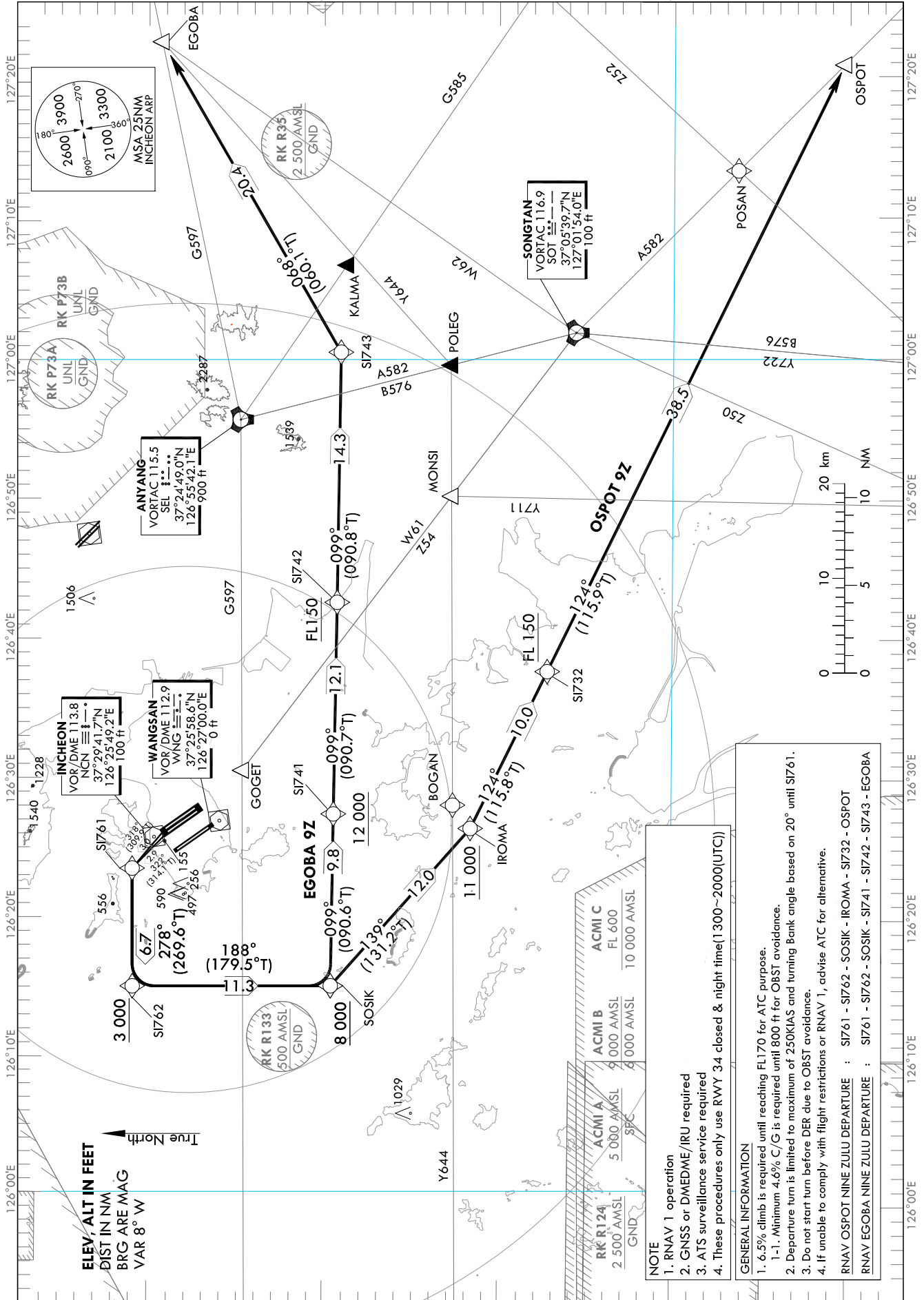
STANDARD DEPARTURE CHART
INSTRUMENT (SID) - ICAO

TRANSITION ALT 14 000
TRANSITION LVL FL 140

SEOUL DEP 125.15
121.4
124.8
INCHEON TWR 118.2
118.8

SEOUL/Incheon Intl(RKSI)
RWY 33L/R
RNAV OSPOT 9Z
RNAV EGOBA 9Z

Note : Departure under ICAO Flight Procedures.



Change : New procedure.

SEOUL/Incheon Intl(RKSI)
RWY 33L/R
RNAV OSPOT 9Z, RNAV EGOBA 9Z

AERONAUTICAL DATA TABULATION

Standard Instrument Departure Procedure Coding Tables

RNAV OSPOT 9Z												
Serial Number	Path Descriptor	Waypoint Identifier	Fly-over	Course/Track °M(°T)	Distance (NM)	Turn direction	Altitude (ft)	Speed (kt)	Coordinates	VPA/TCH	Navigation specification	Remarks
001	CF	S1761	-	33L-322(314.1) 33R-318(309.9)	33L-2.9 33R-3.0	L	-	-250	373056.1 N 1262333.3 E (R 292 SEL/D26, R 339 WING/D6)	-	RNAV 1	Bank angle 20°
002	TF	S1762	-	278 (269.6)	6.7	-	+3 000	-	373053.2 N 1261507.3 E (R289 SEL/D33, R 305 WING/D11)	-	RNAV 1	-
003	TF	SOSIK	-	188 (179.5)	11.3	-	+8 000	-	371935.0 N 1261514.0 E (R269 SEL/D33, R 299 SOT/D40)	-	RNAV 1	-
004	TF	IROMA	-	139 (131.2)	12.0	-	+11 000	-	371139.7 N 1262632.1 E (R 249 SEL/D27, R 290 SOT/D29)	-	RNAV 1	-
005	TF	S1732	-	124 (115.8)	10.0	-	+FL 150	-	370718.5 N 1263744.9 E (R 227 SEL/D23, R 283 SOT/D19)	-	RNAV 1	-
006	TF	OSPOT	-	124 (115.9)	38.5	-	-	-	365018.1 N 1272054.9 E (R 157 SEL/D40, R 143 SOT/D22)	-	RNAV 1	-

RNAV EGOBA 9Z												
Serial Number	Path Descriptor	Waypoint Identifier	Fly-over	Course/Track °M(°T)	Distance (NM)	Turn direction	Altitude (ft)	Speed (kt)	Coordinates	VPA/TCH	Navigation specification	Remarks
001	CF	S1761	-	33L-322(314.1) 33R-318(309.9)	33L-2.9 33R-3.0	L	-	-250	373056.1 N 1262333.3 E (R 292 SEL/D26, R 339 WING/D6)	-	RNAV 1	Bank angle 20°
002	TF	S1762	-	278 (269.6)	6.7	-	+3 000	-	373053.2 N 1261507.3 E (R 289 SEL/D33, R 305 WING/D11)	-	RNAV 1	-
003	TF	SOSIK	-	188 (179.5)	11.3	-	+8 000	-	371935.0 N 1261514.0 E (SEL R-269/D33, R 299 SOT/D40)	-	RNAV 1	-
004	TF	S1741	-	099 (090.6)	9.8	-	+12 000	-	371928.6 N 1262731.1 E (R 265 SEL/D23, R 305 SOT/D31)	-	RNAV 1	-
005	TF	S1742	-	099 (090.7)	12.1	-	+FL 150	-	371918.2 N 1264238.8 E (R 250 SEL/D12, R 320 SOT/D21)	-	RNAV 1	-
006	TF	S1743	-	099 (090.8)	14.3	-	-	-	371905.3 N 1270031.4 E (R 154 SEL/D7, R 003 SOT/D14)	-	RNAV 1	-
007	TF	EGOBA	-	068 (060.1)	20.4	-	-	-	372914.7 N 1272245.9 E (R 086 SEL/D22, R 043 SOT/D29)	-	RNAV 1	-

Change : New procedure.

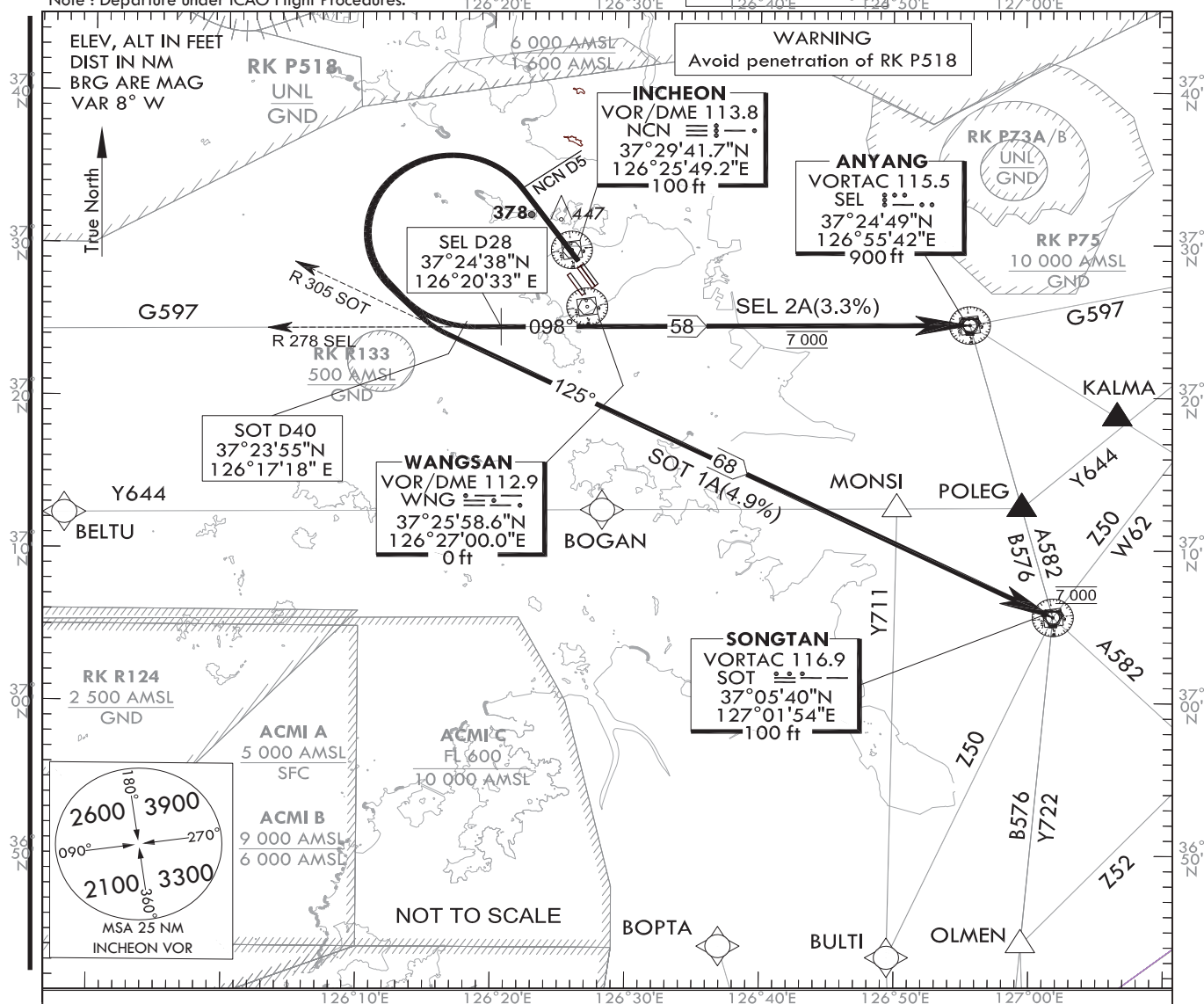
**STANDARD DEPARTURE CHART
INSTRUMENT (SID) - ICAO**

SEOUL DEP 125.15
121.4
124.8
INCHEON TWR 118.2
118.8

**SEOUL/Incheon Intl(RKSI)
RWY 33R/L
SEL 2A, SOT 1A I**

Note : Departure under ICAO Flight Procedures.

TRANSITION ALT 14 000
TRANSITION LVL FL 140



GENERAL INFORMATION

1. Climb gradient in excess of 3.3% necessary for Airspace and ATC purposes.
 - 1.1 SOT 1A minimum climb gradient 4.9% to FL 170.
2. After NCN D5, 15 degree bank angle recommended during turn for noise abatement and pilot should use caution not to penetrate prohibited area. (RK P518)
3. If unable to comply with flight restrictions, advise ATC well before departure for alternatives.
4. Step climb : Due to interaction with other routes, do NOT climb above 7 000 ft unless cleared by ATC.
5. Pilot shall use caution not to make early or lead turn prior to reaching NCN D5.

SEL(ANYANG) TWO ALPHA DEPARTURE

TAKE OFF RWY 33L/R : Climb straight ahead, at NCN D5 turn LEFT to intercept R 278 SEL and cross R 278 SEL/D28 then proceed to SEL. Maintain 7 000 ft until instructed by ATC.

SOT(SONGTAN) ONE ALPHA DEPARTURE

TAKE OFF RWY 33L/R : Climb straight ahead, at NCN D5 turn LEFT to intercept R 305 SOT and cross R 305 SOT/D40 then proceed to SOT. Maintain 7 000 ft until instructed by ATC.

Change : SID procedure(SEL 1A → SEL 2A)

INTENTIONALLY

LEFT

BLANK

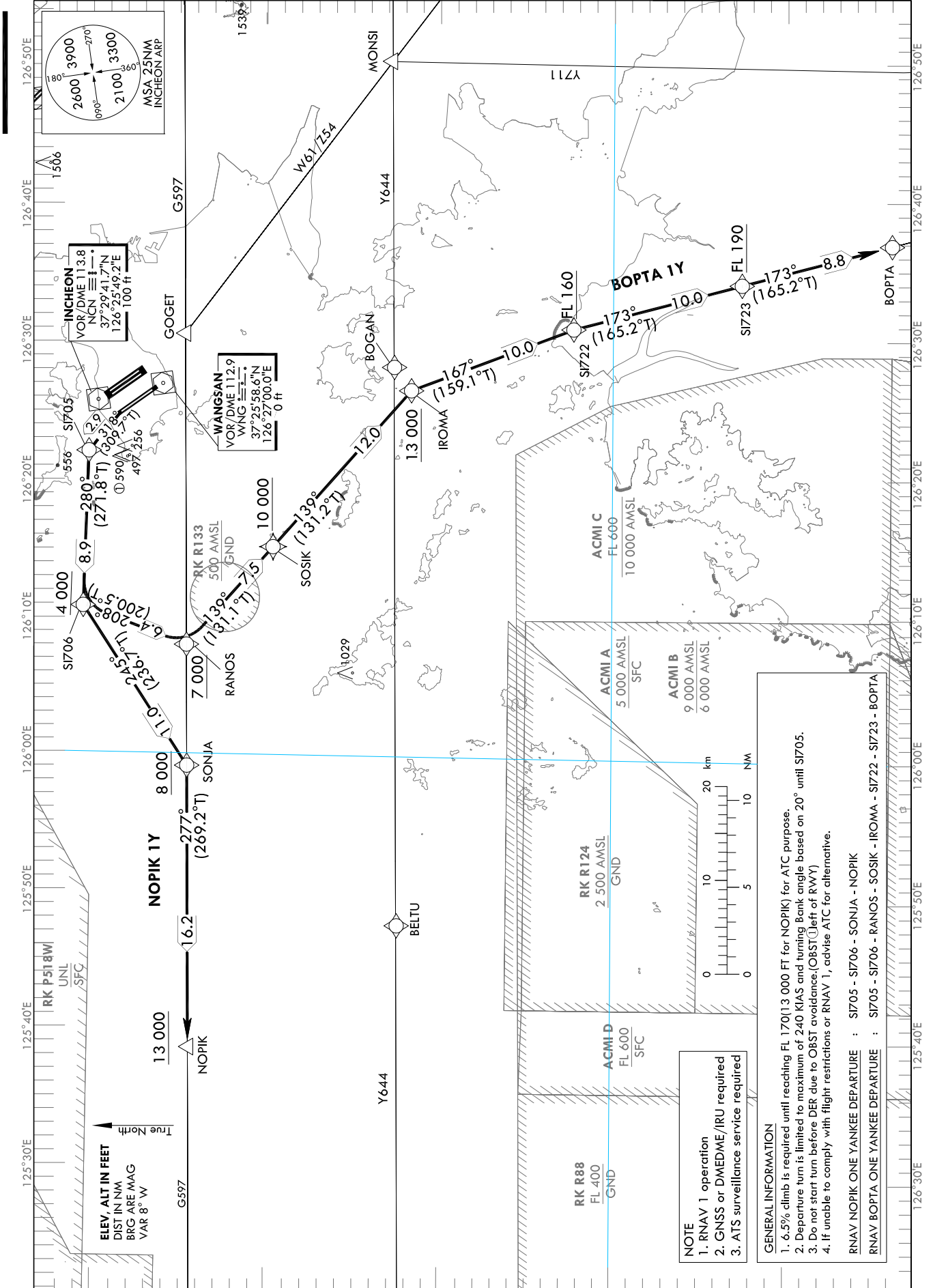
STANDARD DEPARTURE CHART
INSTRUMENT (SID) - ICAO

TRANSITION ALT 14 000
TRANSITION LVL FL 140

SEOUL DEP 125.15
121.4
124.8
INCHEON TWR 118.2
118.8

SEOUL/Incheon Intl(RKSI)
RWY 34
RNAV NOPIK 1Y
RNAV BOPTA 1Y

Note : Departure under ICAO Flight Procedures.



Change : MSA.

SEOUL/Incheon Intl(RKSI)
RWY 34
RNAV NOPIK 1Y, RNAV BOPTA 1Y

AERONAUTICAL DATA TABULATION

Standard Instrument Departure Procedure Coding Tables

Serial Number	Path Descriptor	Waypoint Identifier	Fly-over	Course/Track °M(°T)	Distance (NM)	Turn direction	Altitude (ft)	Speed (kt)	Coordinates	VPA/TCH	Navigation specification	Remarks
001	CF	S1705	-	318 (309.7)	2.9	L	-	-240	373013.3 N 1262207.7 E (R 290 SEL/D27, R 326 WNG/D6)	-	RNAV 1	Bank angle 20°
002	TF	S1706	-	280 (271.8)	8.9	-	+4 000	-	373029.6 N 1261056.9 E (R 287 SEL/D36, R 297 WNG/D14)	-	RNAV 1	-
003	TF	SONJA	-	245 (236.7)	11.0	-	+8 000	-	372426.5 N 1255924.4 E (R 278 SEL/D45, R 274 WNG/D22)	-	RNAV 1	-
004	TF	NOPIK	-	277 (269.2)	16.2	-	+13 000	-	372412.0 N 1253905.0 E (R 278 SEL/D61, R 294 SOT/D69)	-	RNAV 1	-

Serial Number	Path Descriptor	Waypoint Identifier	Fly-over	Course/Track °M(°T)	Distance (NM)	Turn direction	Altitude (ft)	Speed (kt)	Coordinates	VPA/TCH	Navigation specification	Remarks
001	CF	S1705	-	318 (309.7)	2.9	L	-	-240	373013.3 N 1262207.7 E (R 290 SEL/D27, R 326 WNG/D6)	-	RNAV 1	Bank angle 20°
002	TF	S1706	-	280 (271.8)	8.9	-	+4 000	-	373029.6 N 1261056.9 E (R 287 SEL/D36, R 297 WNG/D14)	-	RNAV 1	-
003	TF	RANOS	-	208 (200.5)	6.4	-	+7 000	-	372431.4 N 1260809.0 E (R 278 SEL/D38, R 273 WNG/D15)	-	RNAV 1	-
004	TF	SOSIK	-	139 (131.1)	7.5	-	+10 000	-	371935.0 N 1261514.0 E (R 269 SEL/D33, R 299 SOT/D40)	-	RNAV 1	-
005	TF	IROMA	-	139 (131.2)	12.0	-	+13 000	-	371139.7 N 1262632.1 E (R 249 SEL/D27, R 290 SOT/D29)	-	RNAV 1	-
006	TF	S1722	-	167 (159.1)	10.0	-	+FL 160	-	370219.6 N 1263058.2 E (R 229 SEL/D30, R 270 SOT/D25)	-	RNAV 1	-
007	TF	S1723	-	173 (165.2)	10.0	-	+FL 190	-	365238.3 N 1263410.0 E (R 216 SEL/D37, R 248 SOT/D26)	-	RNAV 1	-
008	TF	BOPTA	-	173 (165.2)	8.8	-	-	-	364406.0 N 1263658.0 E (R 208 SEL/D43, R 231 SOT/D29)	-	RNAV 1	-

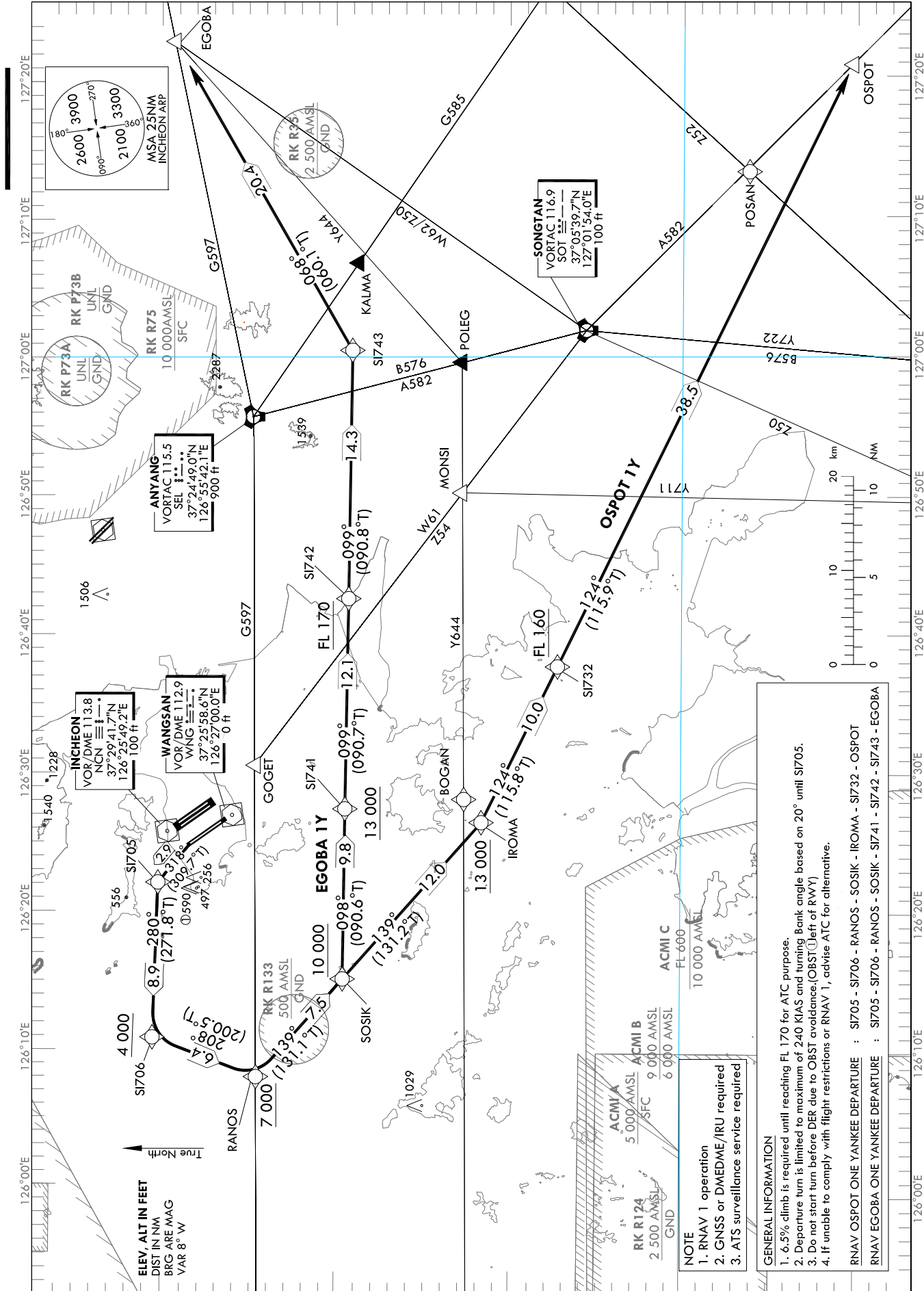
STANDARD DEPARTURE CHART
INSTRUMENT (SID) - ICAO

TRANSITION ALT 14 000
TRANSITION LVL FL 140

SEOUL	DEP	125.15
		121.4
		124.8
INCHEON TWR		118.2
		118.8

SEOUL/Incheon Intl(RKSI)
RWY 34
RNAV OSPORT 1Y
RNAV EGOBA 1Y

Note : Departure under ICAO Flight Procedures.



Change : MSA.

NOTE
1. RNAV 1 operation
2. GNSS or DMEDME/IRU required
3. ATS surveillance service required

GENERAL INFORMATION
1. 6.5% climb is required until reaching FL 170 for ATC purpose.
2. Departure turn is limited to maximum of 240 KIAS and turning Bank angle based on 20° until SI705.
3. Do not start turn before DER due to OBST avoidance (OBST left of RWY)
4. If unable to comply with flight restrictions or RNAV 1, advise ATC for alternative.

RNAV OSPORT ONE YANKEE DEPARTURE : SI705 - SI706 - RANOS - SOSIK - IROMA - SI732 - OSPORT
RNAV EGOBA ONE YANKEE DEPARTURE : SI705 - SI706 - RANOS - SOSIK - SI741 - SI742 - SI743 - EGOBA

SEOUL/Incheon Intl(RKSI)
RWY 34
RNAV OSPOT 1Y, RNAV EGOBA 1Y

AERONAUTICAL DATA TABULATION

Standard Instrument Departure Procedure Coding Tables

Serial Number	Path Descriptor	Waypoint Identifier	Fly-over	Course/Track °M(T)	Distance (NM)	Turn direction	Altitude (ft)	Speed (kt)	Coordinates	VPA/TCH	Navigation specification	Remarks
001	CF	S1705	-	318 (309.7)	2.9	L	-	-240	373013.3 N 1262207.7 E (R 290 SEL/D27, R 326 WNG/D6)	-	RNAV 1	Bank angle 20°
002	TF	S1706	-	280 (271.8)	8.9	-	+4 000	-	373029.6 N 1261056.9 E (R 287 SEL/D36, R 297 WNG/D14)	-	RNAV 1	-
003	TF	RANOS	-	208 (200.5)	6.4	-	+7 000	-	372431.4 N 1260809.0 E (R 278 SEL/D38, R 273 WNG/D15)	-	RNAV 1	-
004	TF	SOSIK	-	139 (131.1)	7.5	-	+10 000	-	371935.0 N 1261514.0 E (R 269 SEL/D33, R 299 SOT/D40)	-	RNAV 1	-
005	TF	IROMA	-	139 (131.2)	12.0	-	+13 000	-	371139.7 N 1262632.1 E (R 249 SEL/D27, R 290 SOT/D29)	-	RNAV 1	-
006	TF	S1732	-	124 (115.8)	10.0	-	+FL 160	-	370718.5 N 1263744.9 E (R 227 SEL/D23, R 283 SOT/D19)	-	RNAV 1	-
007	TF	OSPOT	-	124 (115.9)	38.5	-	-	-	365018.1 N 1272054.9 E (R 157 SEL/D40, R 143 SOT/D22)	-	RNAV 1	-

Serial Number	Path Descriptor	Waypoint Identifier	Fly-over	Course/Track °M(T)	Distance (NM)	Turn direction	Altitude (ft)	Speed (kt)	Coordinates	VPA/TCH	Navigation specification	Remarks
001	CF	S1705	-	318 (309.7)	2.9	L	-	-240	373013.3 N 1262207.7 E (R 290 SEL/D27, R 326 WNG/D6)	-	RNAV 1	Bank angle 20°
002	TF	S1706	-	280 (271.8)	8.9	-	+4 000	-	373029.6 N 1261056.9 E (R 287 SEL/D36, R 297 WNG/D14)	-	RNAV 1	-
003	TF	RANOS	-	208 (200.5)	6.4	-	+7 000	-	372431.4 N 1260809.0 E (R 278 SEL/D38, R 273 WNG/D15)	-	RNAV 1	-
004	TF	SOSIK	-	139 (131.1)	7.5	-	+10 000	-	371935.0 N 1261514.0 E (R 269 SEL/D33, R 299 SOT/D40)	-	RNAV 1	-
005	TF	S1741	-	098 (090.6)	9.8	-	+13 000	-	371928.6 N 1262731.1 E (R 265 SEL/D23, R 305 SOT/D31)	-	RNAV 1	-
006	TF	S1742	-	099 (090.7)	12.1	-	+FL 170	-	371918.2 N 1264238.8 E (R 250 SEL/D12, R 320 SOT/D21)	-	RNAV 1	-
007	TF	S1743	-	099 (090.8)	14.3	-	-	-	371905.3 N 1270031.4 E (R 154 SEL/D7, R 003 SOT/D14)	-	RNAV 1	-
008	TF	EGOBA	-	068 (060.1)	20.4	-	-	-	372914.7 N 1272245.9 E (R 086 SEL/D22, R 043 SOT/D29)	-	RNAV 1	-

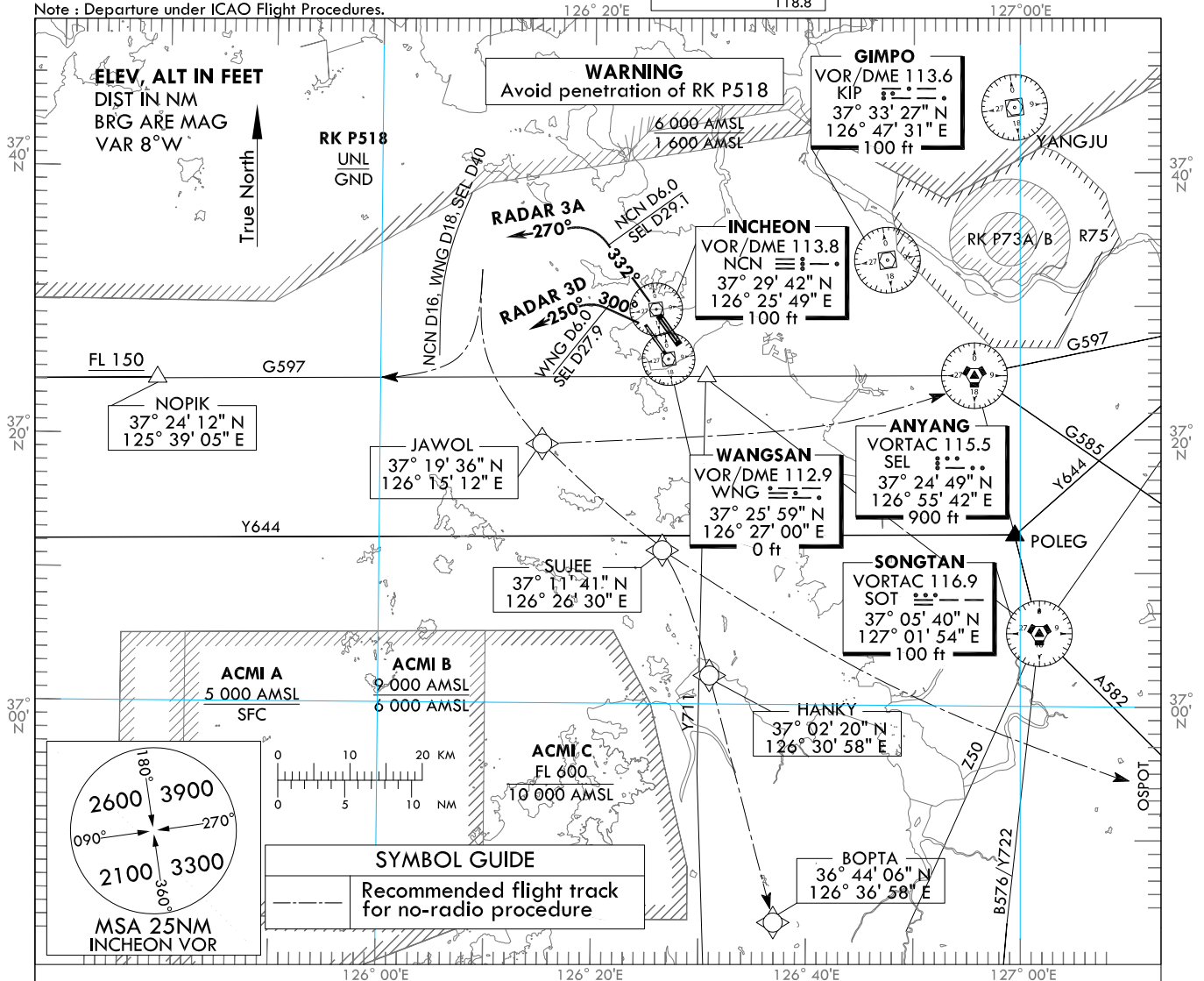
STANDARD DEPARTURE CHART
INSTRUMENT (SID) - ICAO

TRANSITION ALT 14 000
TRANSITION LVL FL 140

SEOUL DEP 125.15
121.4
124.8
INCHEON TWR 118.2
118.8

SEOUL/Incheon Intl(RKSI)
RWY 33L/R RADAR 3A
RWY 34 RADAR 3D

Note : Departure under ICAO Flight Procedures.



GENERAL INFORMATION

1. 6.0% climb gradient required until FL 150 for ATC and airspace purpose.
2. Pilot shall use caution not to penetrate prohibited or restricted areas around airport.
3. Aircraft may experience delay due to airspace use coordination, traffic volume, and so on.

RADAR THREE ALPHA DEPARTURE

TAKE OFF RWY 33L/R : Climb on RWY heading until NCN D6.0(SEL D29), turn left heading 270° expect radar vector to airway.

No radio procedure : If no radio contact with ATC, squawk 7 600, and unless otherwise instructed by ATC proceed as follows.

- fly south to join R 269 SEL to SEL or proceed direct to JAWOL then SEL for G597
- fly south to join G597 to NOPIK
- fly south to SUJEE and OSPOT for A582
- fly south to JAWOL, SUJEE, HANKY and BOPTA for RINBO via Z51

Pilot shall remain within 16DME of NCN (SEL D40 or 17NM from Airport as appropriate) during on heading 270°

RADAR THREE DELTA DEPARTURE

TAKE OFF RWY 34 : Climb heading 300° until WNG D6.0(SEL D27.9), turn left heading 250° expect radar vector to airway. Maintain 3 000 ft until instructed by ATC.

No radio procedure : If no radio contact with ATC, squawk 7 600, and unless otherwise instructed by ATC proceed as follows.

- fly south to join R 269 SEL to SEL or proceed direct to JAWOL then SEL for G597
- fly south to join G597 to NOPIK
- fly south to SUJEE and OSPOT for A582
- fly south to JAWOL, SUJEE, HANKY and BOPTA for RINBO via Z51

Pilot shall remain within NCN D16 (SEL D40 or 17NM from Airport as appropriate) during on heading 250°

Change : MSA.

INTENTIONALLY

LEFT

BLANK